

INSTALLATION GUIDE

UPS SERIES

POWER MANAGER SOFTWARE

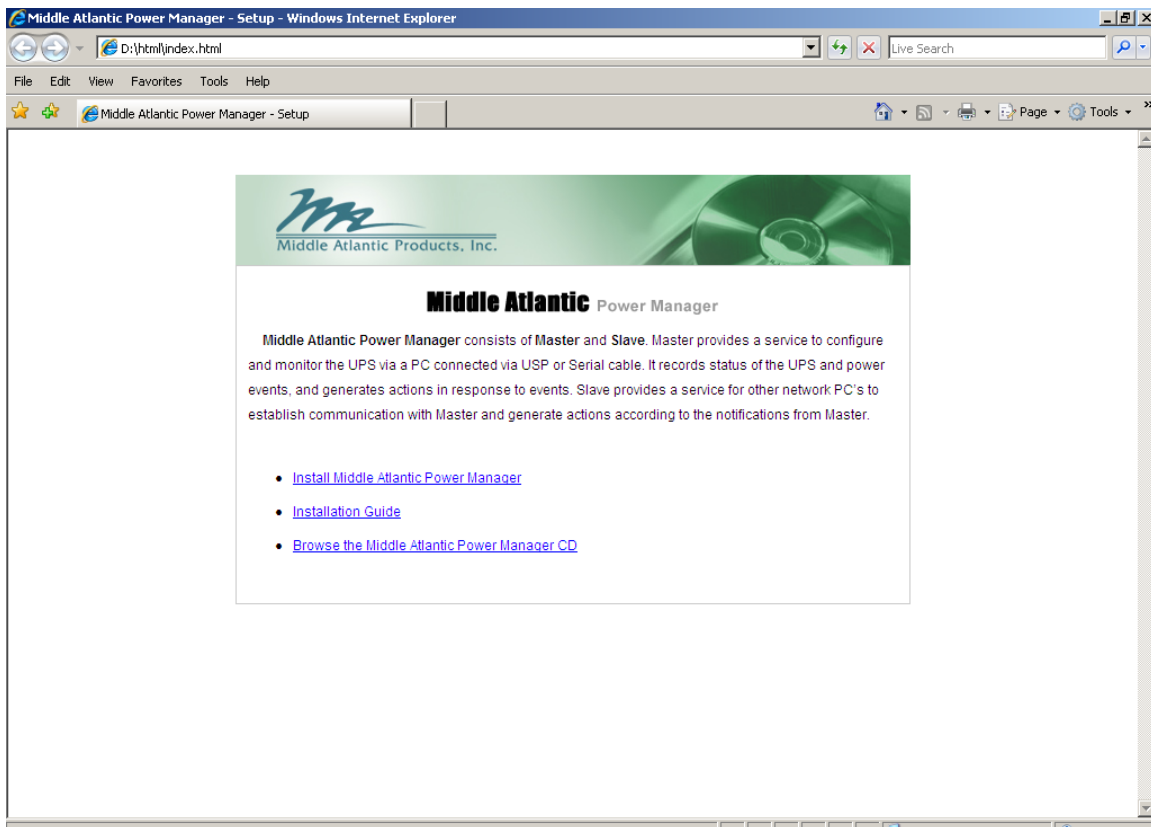


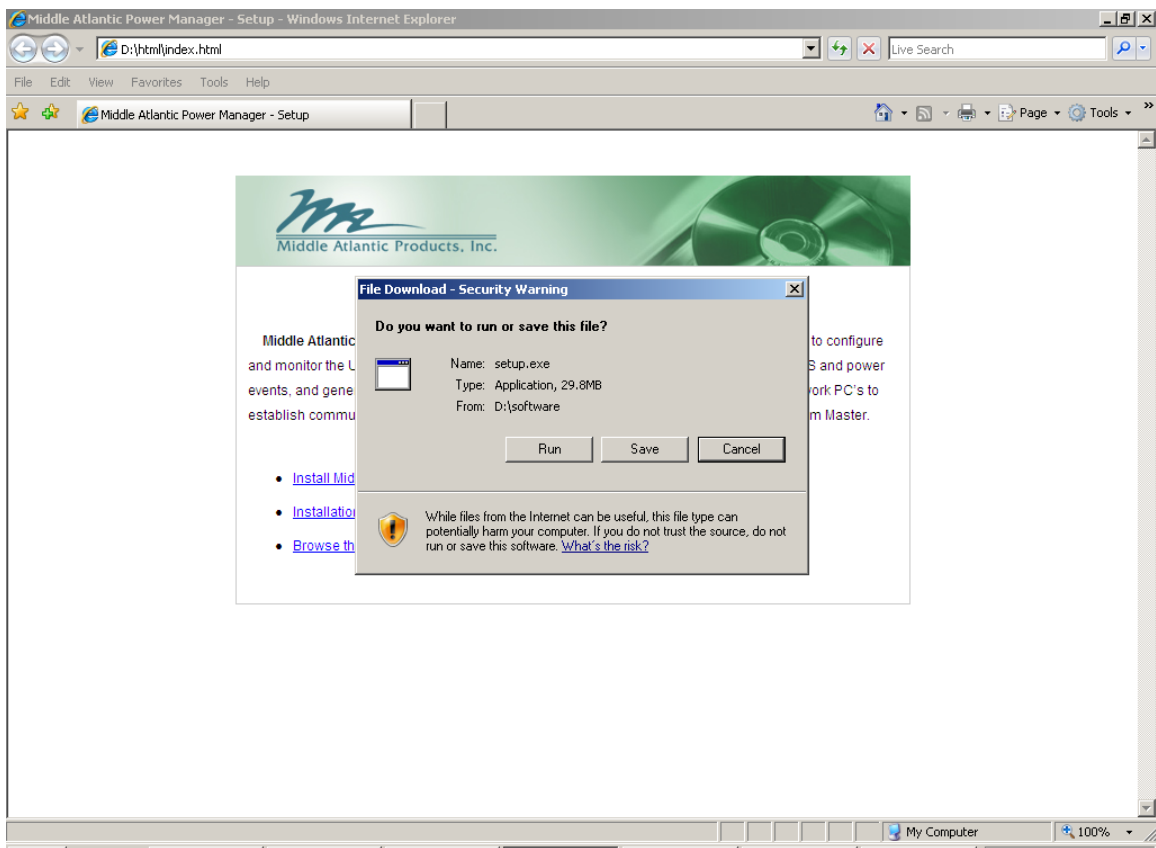
TO BEGIN SOFTWARE INSTALLATION

Step 1: Insert CD provided with your UPS into your CD-ROM Drive.

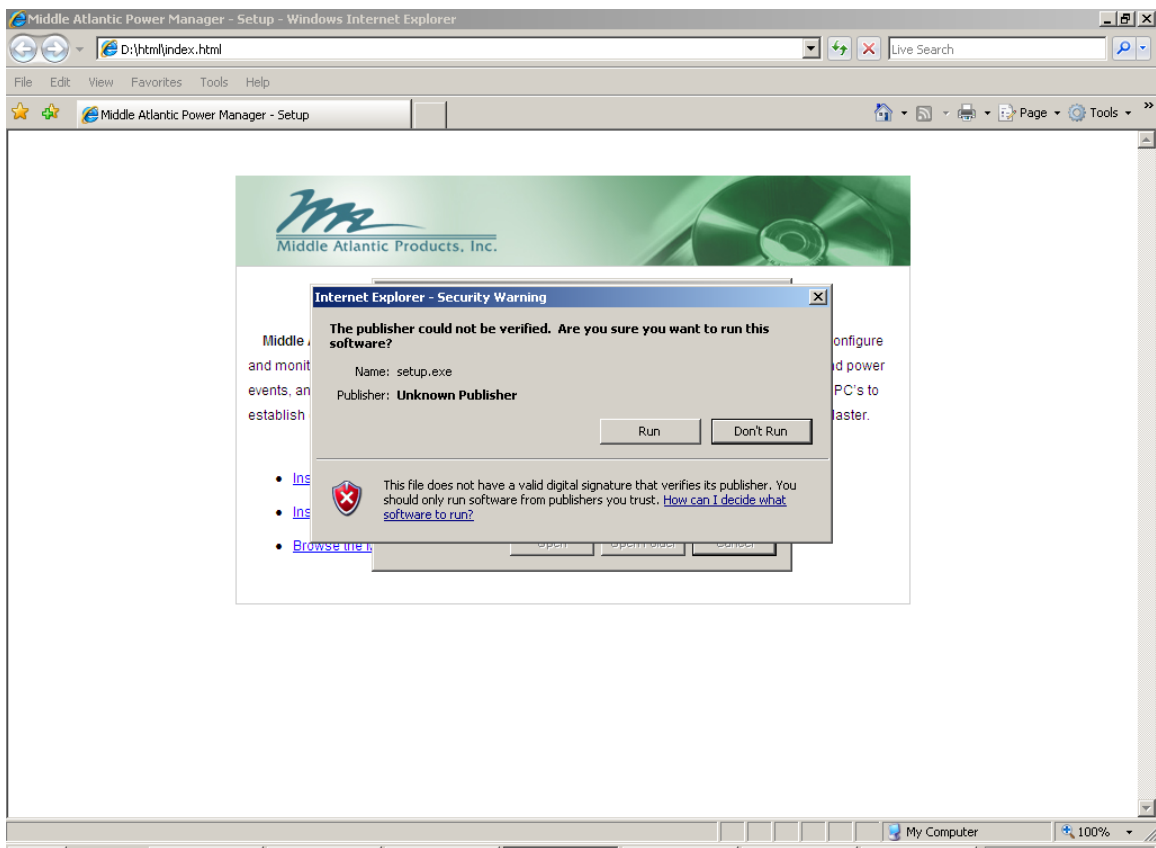
Step 2: Installation page should start automatically. If installation fails to start automatically then click on the **START** menu, click **RUN** type in D:\cmd\startup.bat (D = to your CD-ROM Drive then click **OK**)

Step 3: Click on the “Install Middle Atlantic Power Manager” link.

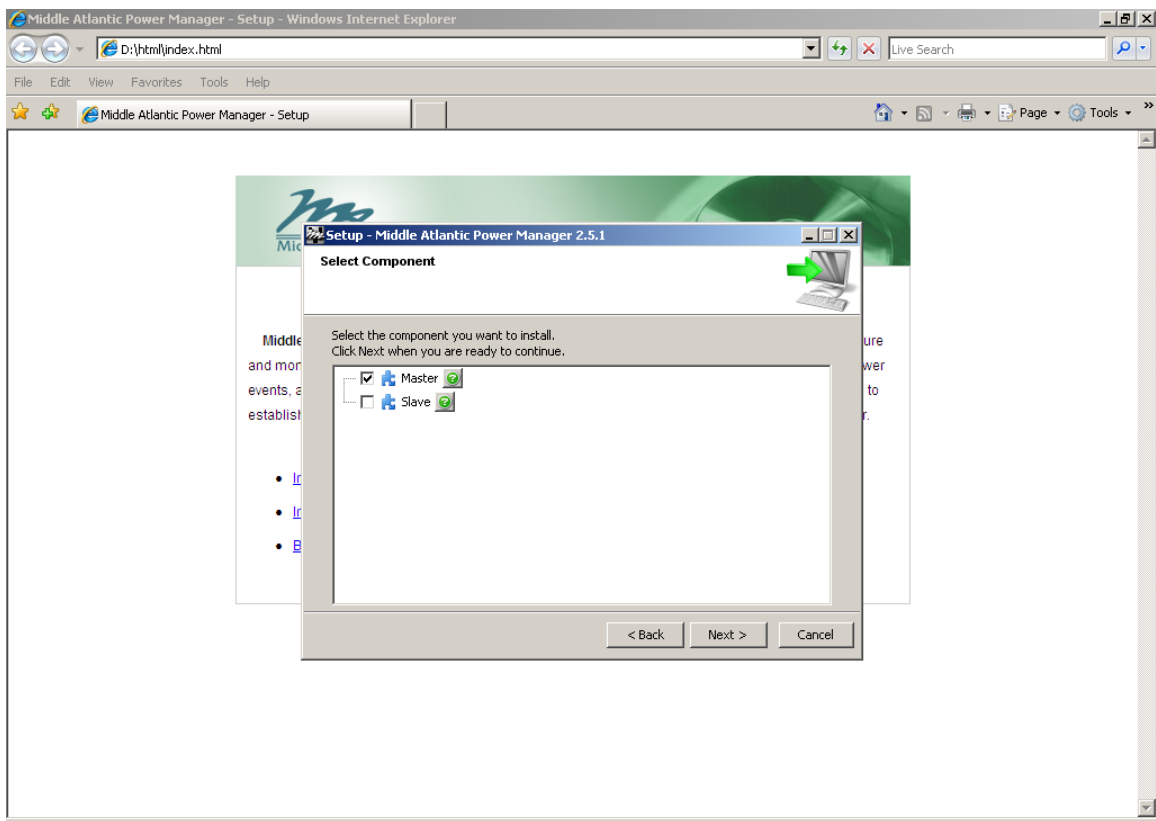




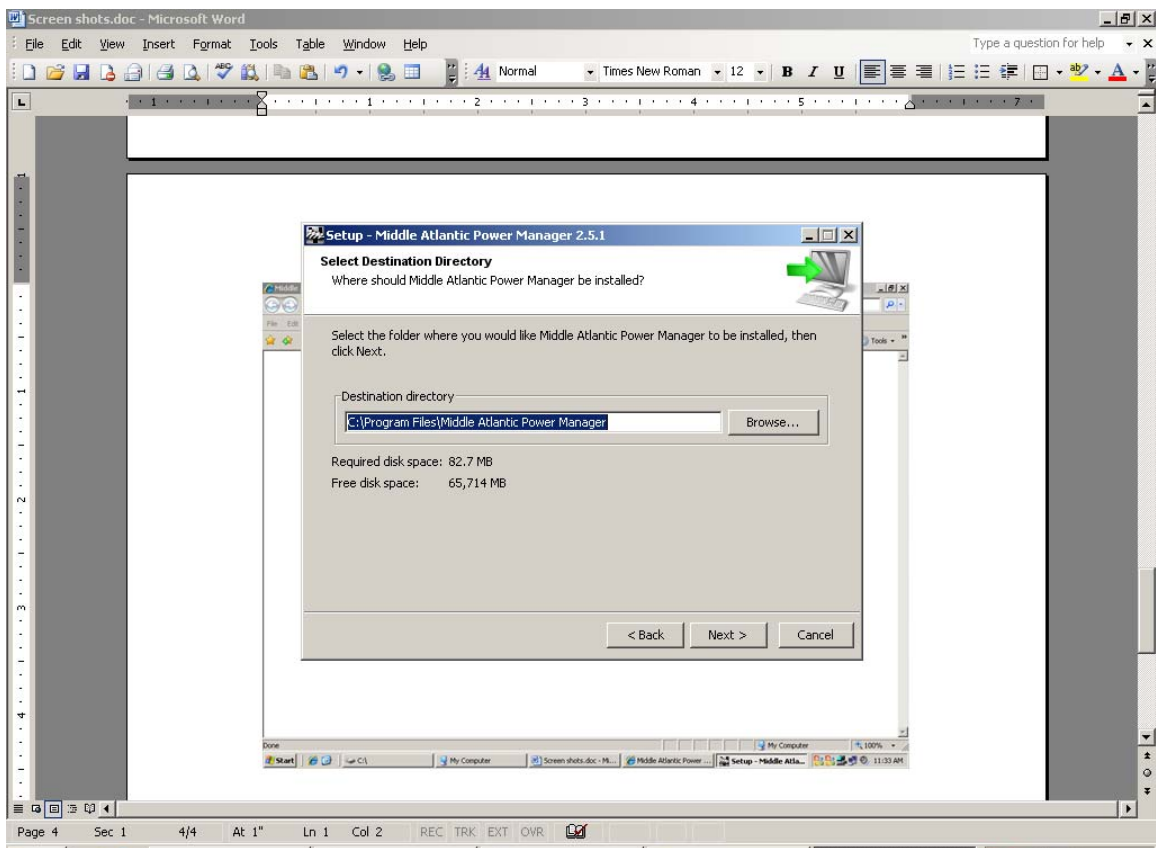
Step 4: Click RUN.



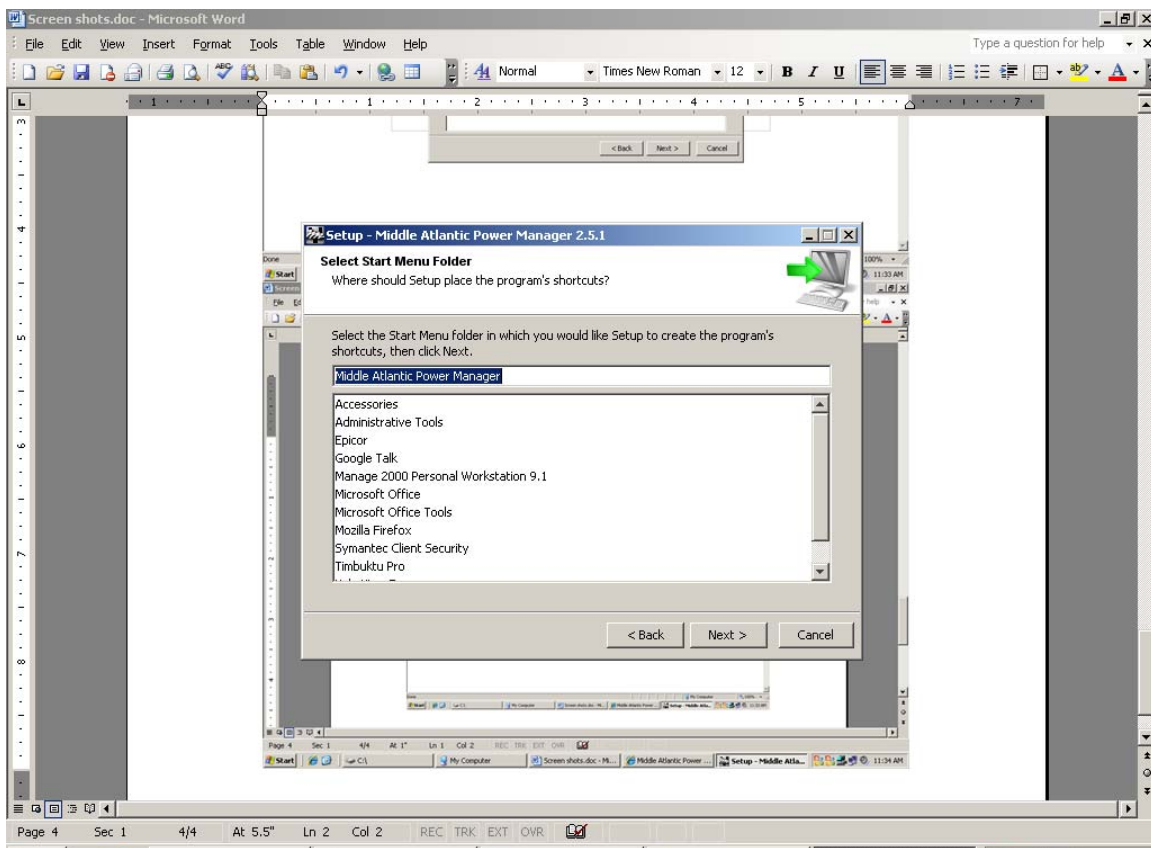
Step 5: Click RUN.



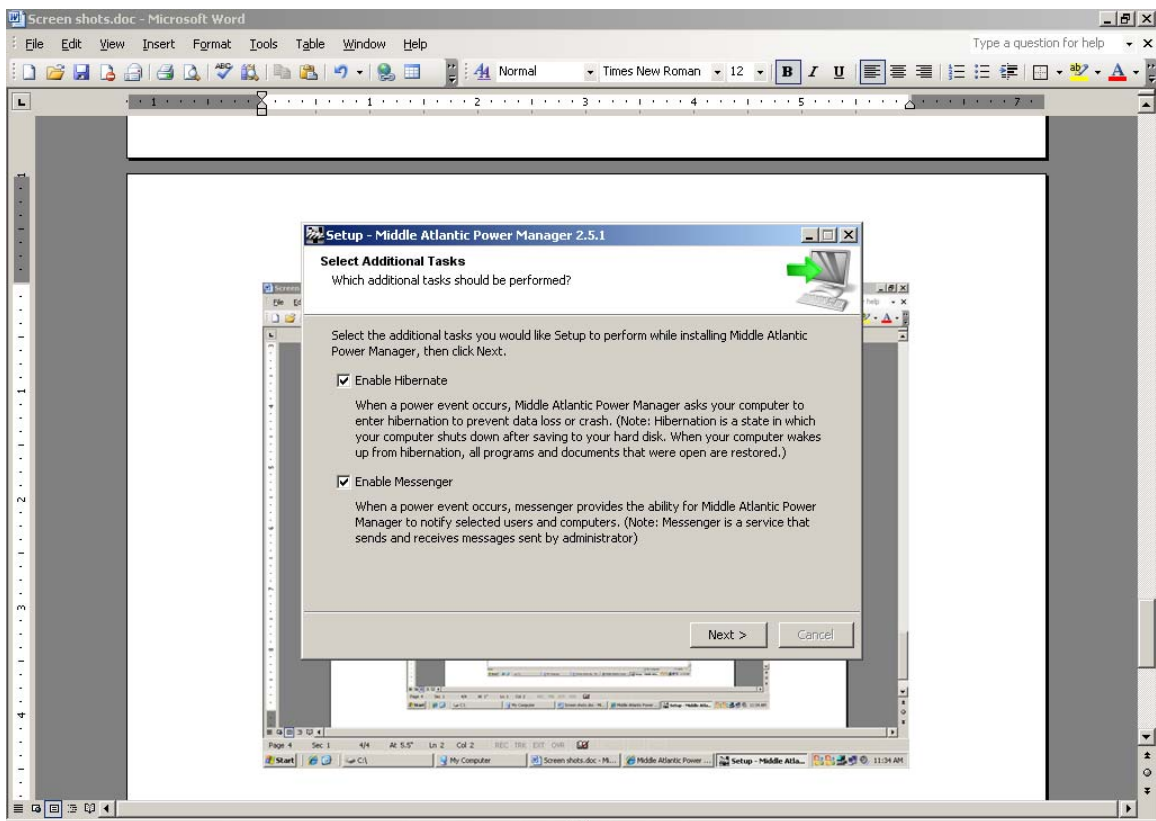
Step 6: Choose Master or Slave installation by clicking on the box to the left of option. then click **NEXT**.



Step 7: Installation directory is defaulted. If you would like to choose a different location Click on the Browse button and select a folder then click **NEXT**.

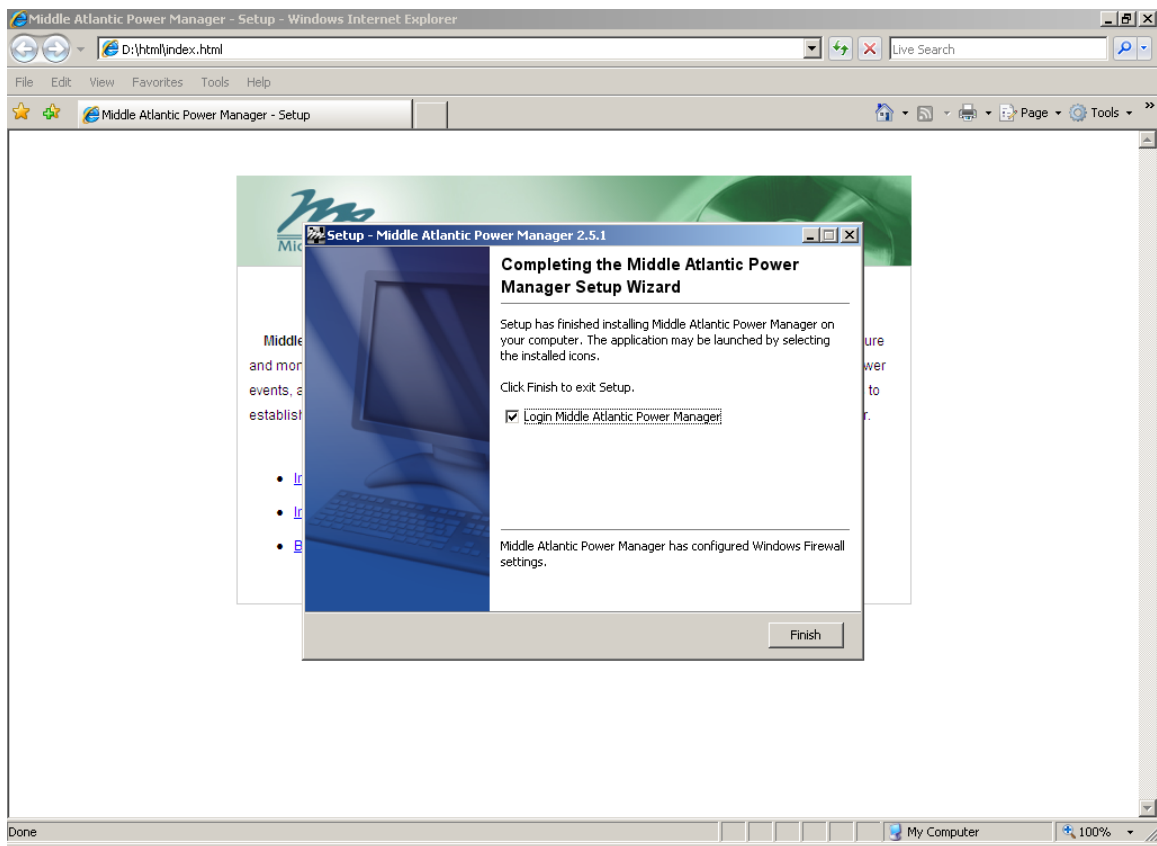


Step 8: The software defaults in the program menu to the above title. If you choose to change the title, type the new title here then click **NEXT**.



Step 9: Choose your options here to enable hibernate and event messaging then click **NEXT**.

Note: if these options are already enabled on your computer, this screen will not be shown.



Step 10: Click **FINISH**

You have completed the software installation.

Please see the POWER MANAGER SOFTWARE USER MANUAL, also available on the included CD.