

Quick Start Guide



TPControl BYOD

PAGE 1 OF 2

Registering your BYOD License Token

NEW USER — SIGN UP Skip this step if you have an existing account with Touch Panel Control.

1 Open your Internet Browser.

Go to <http://www.touchpanelcontrol.com> to Register.



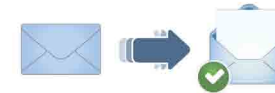
2 Click Register and fill in your details.

- Enter your **Account details**.
- Fields marked with an (*) are compulsory/required fields.
- If applicable, enter your AMX Company ID to enable all features of the site.
- When all required fields have been entered, click «**Submit**».

3 Account creation Complete.

Congratulations! An email will be sent to your registered email address.

Click the activation link within the email and you are ready to access your Touch Panel Control account and manage your Tokens online.



ADD A BYOD TOKEN: VIA TPCLOUD

1 Login to TPcloud.

Login to tpcloud.touchpanelcontrol.com using your TPC User ID.

2 Add your BYOD Token.

- Within the 'BYOD Tokens' tab, click «**Add BYOD Token**».
- Enter the BYOD Token and optional reference in the fields provided, then press «**Add Token**».

3 BYOD Token ready to use.

Your BYOD Token is now stored in your account.

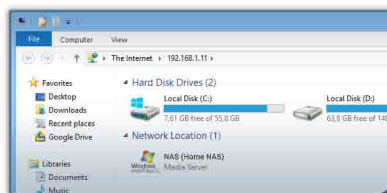
Use the '**Generate Key**' option available in '**TPcloud > BYOD Tokens > (token) > View Details**' to create the registration key for the AMX NetLinX system. Use '**Download Key**' to download the key to your computer.



FTP BYOD LICENSE KEY: TO NETLINX MASTER (e.g. via Windows Explorer).

1 Open Windows Explorer.

Open a new Windows Explorer window



2 Initiate FTP session.

Within the address bar, type in the FTP protocol and IP address of the NetLinX controller and press enter.

Example: `ftp://192.168.1.11`

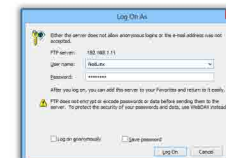


3 Validate Login.

When prompted for the username and pass, enter in the Username and password for your NetLinX controller box. The default details are:

User: `NetLinX`

Password: `password`



4 Copy/Paste License.

When logged in successfully, drag the '**system_license.tpc**' file into the window and release to start the copy process.



Quick Start Guide



TPControl BYOD

PAGE 2 OF 2

Generate a BYOD compatible TP4 file

GENERATE TP4 FILE: USING TPTRANSFER

1 Download / Install TPTransfer.

- Go to <http://www.touchpanelcontrol.com> and select Downloads > TPTransfer.
- Install/Run TPTransfer.



2 Drag-and-Drop.

Locate the TP4 file to be converted. If already available in TPTransfer file history:

- Drag-and-drop from the TPTransfer «Filename» history column.

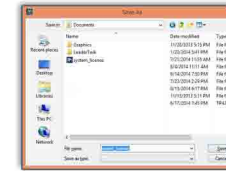
Alternately:

- Drag-and-drop from a file-store location on your computer.



3 Save the BYOD TP4 file.

- Save the 'system_license.tp4' file in a handy location.
- Go to «FTP BYOD TP4 FILE: TO NETLIX MASTER».



GENERATE TP4 FILE: USING TPCLOUD

1 Login to TPCloud.

Login to tpcloud.touchpanelcontrol.com using your TPC User ID.



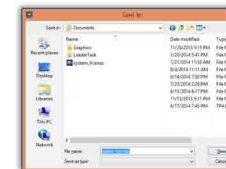
2 TPcloud > BYOD Tokens.

- Select «BYOD Tokens».
- Click on any BYOD Token.
- Select «Download system_license.tp4».



3 Save the BYOD TP4 file.

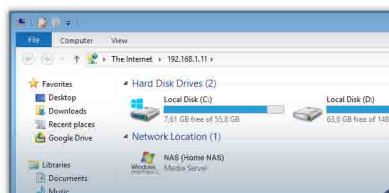
- Save the 'system_license.tp4' file in a handy location.
- Go to «FTP BYOD TP4 FILE: TO NETLIX MASTER».



FTP BYOD TP4 FILE: TO NETLIX MASTER (e.g. via Windows Explorer).

1 Open Windows Explorer.

Open a new Windows Explorer window



2 Initiate FTP session.

Within the address bar, type in the FTP protocol and IP address of the NetLix controller and press enter.

Example: `ftp://192.168.1.11`



3 Validate Login.

When prompted for the username and pass, enter in the Username and password for your NetLix controller box. The default details are:

User: `NetLix`

Password: `password`



4 Copy/Paste TP4 File.

When logged in successfully, drag the 'system_license.tp4' file into the window and release to start the copy process.



Quick Start Guide



TPControl

PAGE 1 OF 1

Registering your TPControl Device Token

NEW USER — SIGN UP Skip this step if you have an existing account with Touch Panel Control.

1 Open your Internet Browser.

Go to <http://www.touchpanelcontrol.com> to Register.



2 Click Register and fill in your details.

- Enter your **Account details**.
- Fields marked with an (*) are compulsory/required fields.
- If applicable, enter your AMX Company ID to enable all features of the site.
- When all required fields have been entered, click «**Submit**».

3 Account creation Complete.

Congratulations! An email will be sent to your registered email address.

Click the activation link within the email and you are ready to access your Touch Panel Control account and manage your Tokens online.



TOKEN REGISTRATION: VIA TPCLOUD

1 Add TOKEN information.

- Login to tpcloud.touchpanelcontrol.com using your TPC User ID.
- Within the «Tokens» Tab, click the «+ Add Token» button.
- Enter the Token ID and a reference in the fields provided and press «Add Token».
- Your Token is now assigned to your account.

2 Configure your Token.

- Click on the Token and access the Settings and TP4 files options.
- Upload a TP4 file and configure Settings.
- Enable both «TPCloud update options».
- Within the «View Details» tab click the «Create a PIN» button.

3 Register using a PIN.

- On the device, within TPControl Settings, enable «TPCloud PIN».
- Start TPControl, enter the PIN within the dialogue box to automatically register the device and receive the TP4 file and settings configured through TPCloud.

4 Device registration complete.

Device registration complete.



TOKEN REGISTRATION: VIA TPCONTROL

1 Turn on Token Registration.

- Within TPControl Settings on your device, turn on the «Token Registration» option.
- Exit from Settings, and return to TPControl.

2 Enter registration details.

- Enter your registered email address in the «TPC User ID» field.
- Enter your TPControl Device Token value in the «Token» field, then press «SUBMIT».

3 Device registration complete.

Device registration complete.

