

TAG TECSLATE™

Quick Reference Guide



Contact us for a quote and more information:

575 WASHINGTON STREET STE 1, PEMBROKE, MA 02359 | 1-800-630-4708

CEO@TAGGLOBALSYSTEMS.COM | www.TAGGlobalSystems.com



COPYRIGHT

©2020 TAG Global Systems. All rights reserved. TRADEMARKS

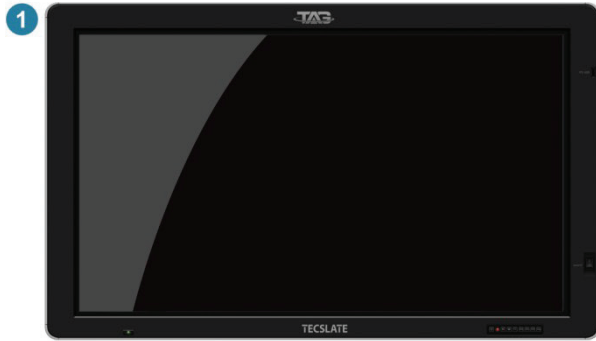
The documentation and the software included with this product are copyrighted 2020 by TAG Global Systems, LLC. All rights are reserved. TAG Global Systems, LLC. reserves the right to make improvements in the products described in this manual at any time without notice. No part of this manual may be reproduced, copied, translated or transmitted in any form or by any means without the prior written permission of TAG Global Systems, LLC. Information provided in this manual is intended to be accurate and reliable. However, TAG Global Systems, LLC. assumes no responsibility for its use, nor for any infringements of the rights of third parties, which may result from its use.

ACKNOWLEDGEMENTS

All other product names or trademarks are properties of their respective owners.



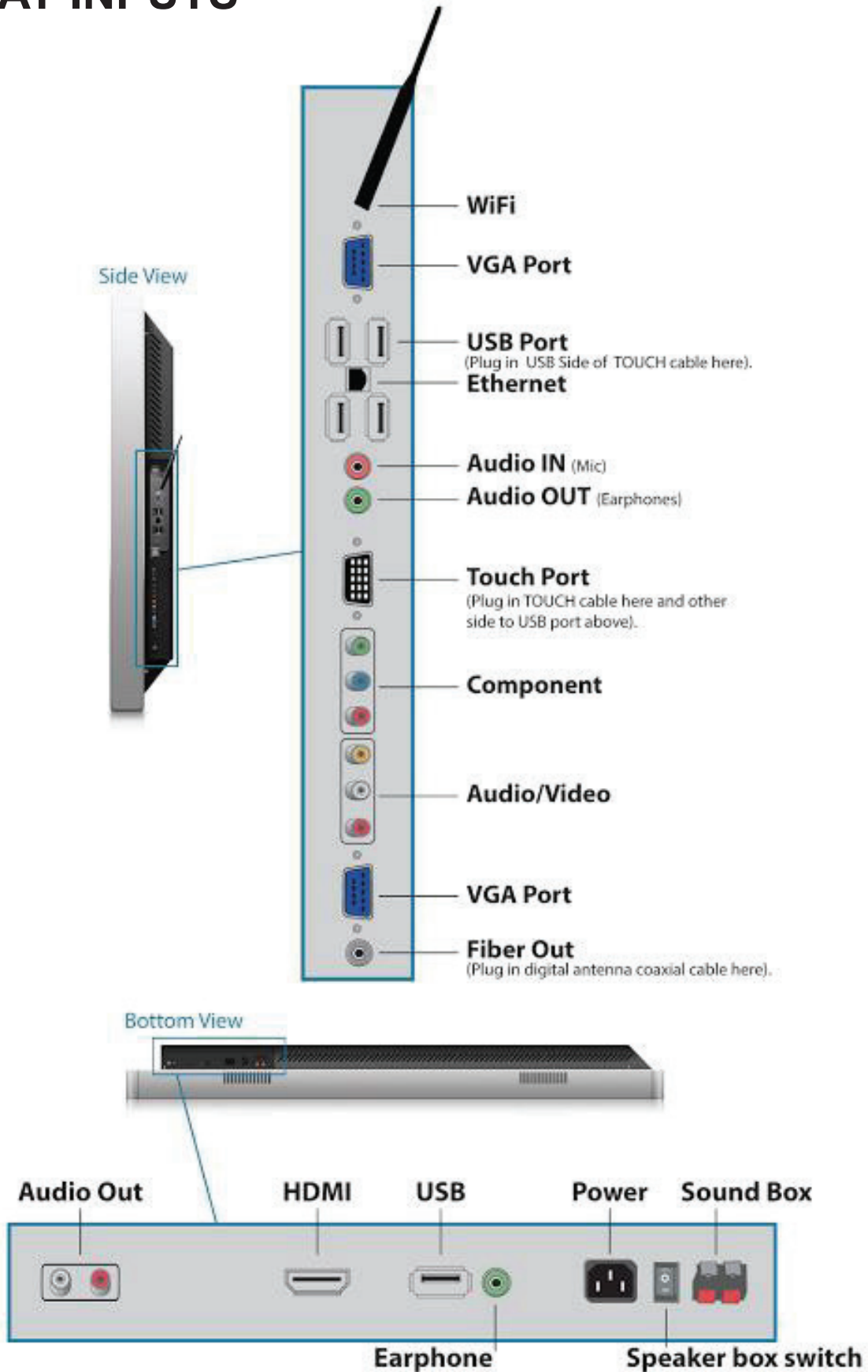
TAG TECSLATE™ PARTS LIST



1. 1920 x 1080 TAG TECSLATE™ Monitor
2. Wireless keyboard (batteries not included)
3. Four Stylus pens
4. Wireless keyboard & mouse dongle
5. Wireless mouse (batteries not included)
6. HD Webcam 720p

7. Remote control (batteries not included)
8. Ethernet cable
9. Wall mounting fixture
10. Digital antenna
11. VGA to USB touch cable
12. Power adapter

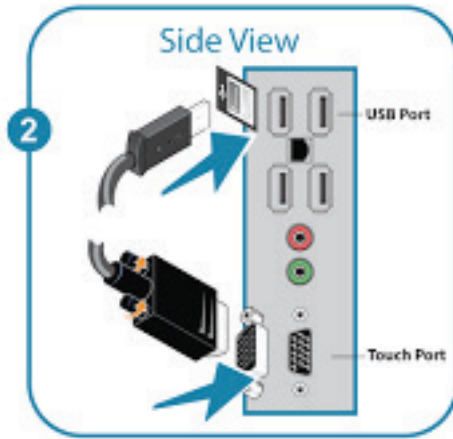
TAG TECSLATE™ DISPLAY INPUTS



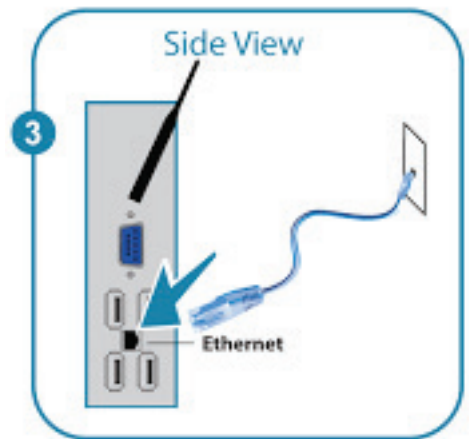
GETTING STARTED



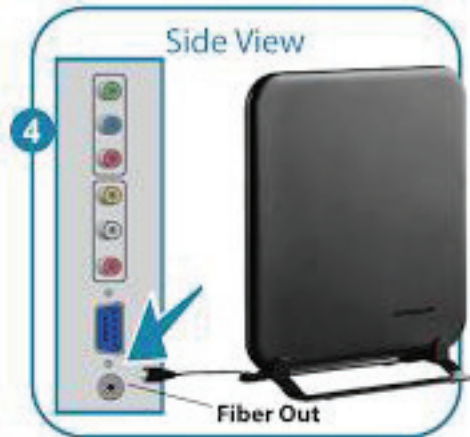
1 Connect wireless keyboard and mouse dongle to USB port (batteries not included)



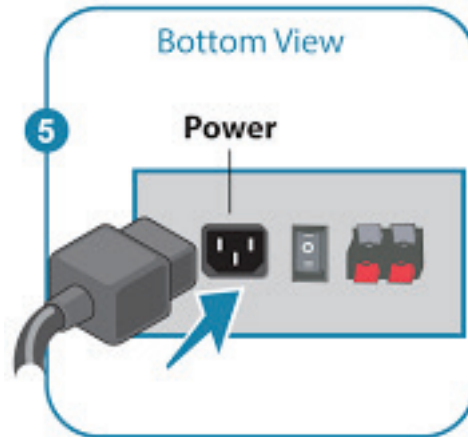
2 Connect 15 pin touch cable to **TOUCH** port and existing end to **USB** port



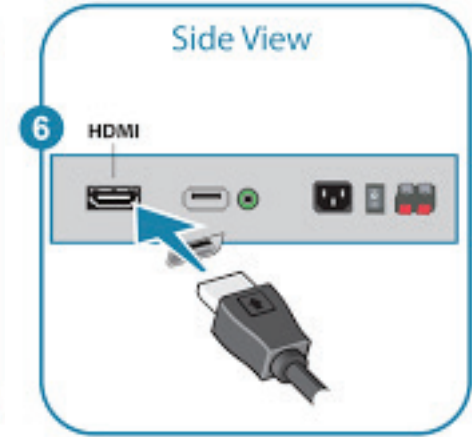
3 Connect Ethernet cable to Ethernet port and existing end to wall



4 Set antenna up and plug into **FIBER OUT** coaxial



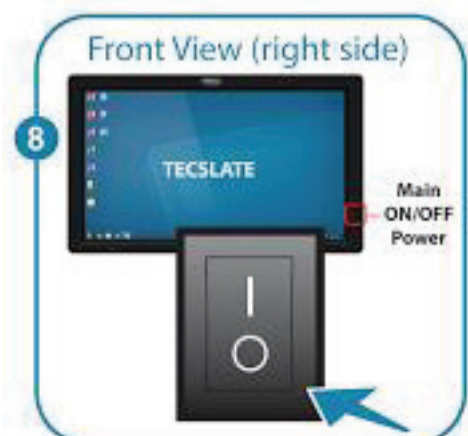
5 Connect power adapter to bottom **POWER** socket



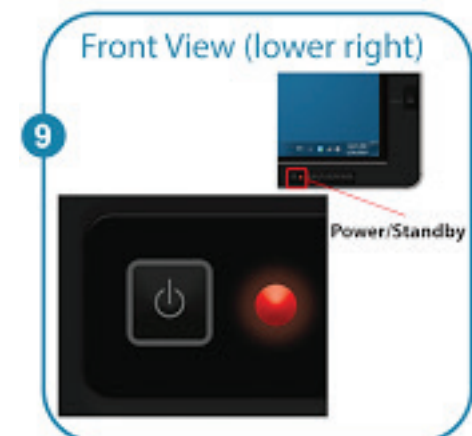
6 Connect Blu-Ray™ DVD card to **HDMI** port underneath monitor



7 Mount webcam and connect **USB** port



8 Locate main power on front right panel and switch to "ON" position



9 Turn on **Power/Standby**. Button is located next to PC button on front lower right panel



10 Turn on **PC** button located next to power/standby on front lower right panel



Tomorrow's Technology...Today!

www.TAGGlobalSystems.com verify specifications before quoting. This guide is intended for reference purposes only. All product specifications are subject to change without notice. No part of this publication may be reproduced in any form or by any means, electronic, photocopying, recording or otherwise, without prior written permission of the publisher. All brand and product names are trademarks or registered trademarks of their respective companies.

© TAG GLOBAL SYSTEMS, LLC. 2020