



STEP 1

Remove M1000 from package via hangers provided. Hangers are factory installed to facilitate mounting of the M1000 for upward sound dispersion, Figure 1. This dispersion configuration is the most popular and most effective.

If horizontal (side firing) dispersion is required, the hangers may be re-located as shown in Figure 2.

If down firing dispersion is required, the hangers may be relocated as shown in Figure 3.

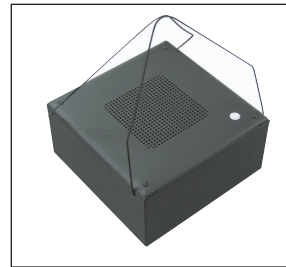


Figure 1
M1000 Shown w/hangers located as configured from factory for Upward sound dispersion



Figure 2
M1000 Shown w/hangers configured for Horizontal sound dispersion

STEP 2

Install the M1000 per Figure 1, 2 or 3, using hanger wire (not included).

NOTE: Code requirements in many areas require the use of #12 suspension cable for commercial applications. Check your local codes before installing the M1000.

STEP 3

Terminate service loop to the to the amplifier output line (black is negative, red is positive) – see Figure 4.

NOTE: Strain relief is not designed to accommodate conduit. Use approved terminations through the knock-outs provided on the M1000 cover plate when conduit is used.

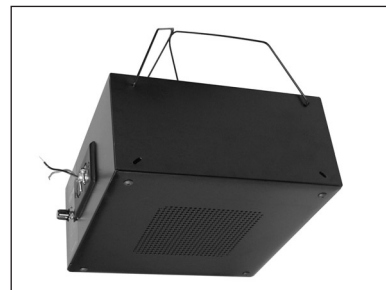


Figure 3
M1000 Shown w/hangers configured for Downward sound dispersion

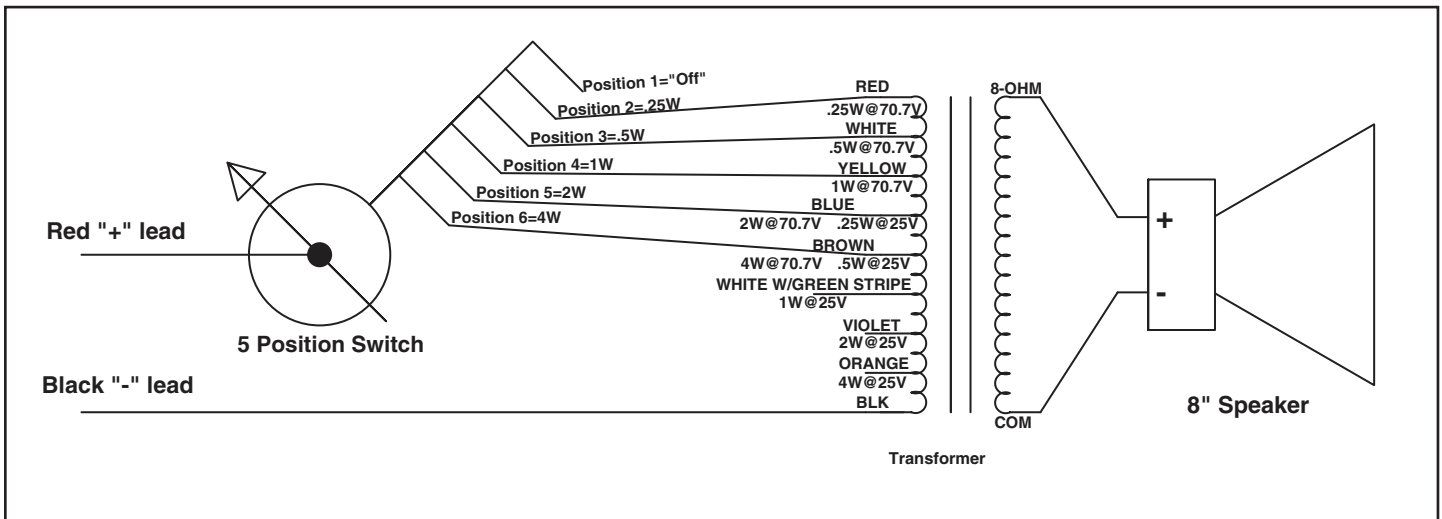


Figure 4

STEP 4

Set tap selector switch to desired power setting.

M1000 WIRING BLOCK DIAGRAM



| SPECIFICATIONS | | | | | | | | |
|----------------|-------------------------|-----------------|---------------|--|--------------------------|---|---------------|-------------------|
| MODEL | LOUDSPEAKER | MAGNET WEIGHT | SENSITIVITY | FREQUENCY RESPONSE | TRANSFORMER TAPS @ 70.7V | ENCLOSURE | | WEIGHT |
| | | | | | | DIMENSIONS | VOLUME | |
| M1000 | 8" (203mm) Dual Cone | 10oz. (260g) | 92dB 1W/1M | 150Hz - 6kHz (±3dB) 120Hz - 6.5kHz (±5dB) | .25, .5, 1, 2, 4 | 11 ¹ / ₁₆ "L x 11 ¹ / ₁₆ "W x 5 ¹ / ₂ "H (294 x 294 x 140mm) | 734 Cubic in. | 9lbs. (3.4kg.) |

Specifications are subject to change without notice



AtlasSound.com

1601 JACK MCKAY BOULEVARD ENNIS, TEXAS 75119 U.S.A. • TELEPHONE: (800) 876-3333 • FAX: (800) 765-3435