

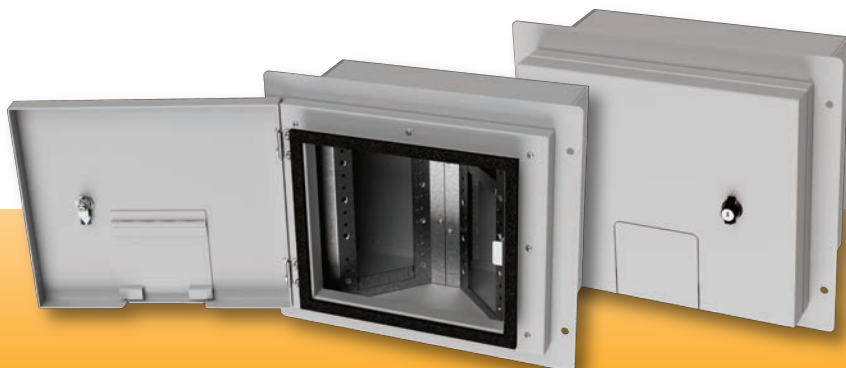
# OWB-500P

## Outdoor Wall Box

# FSR

## Metal Products Group

OWB-500P



**The world's only outdoor wall boxes designed for AV and IT connections!**

### DESCRIPTION

The OWB-500P Outdoor Wall Box is the latest in our series. Locking doors are standard with color and style options available. Stylish covers have “flip up” cable entry doors so the main door can be locked once the cables are connected. The 8” deep OWB-500P includes internal brackets that provide many options for both high and low voltage standard gang openings, making it the most flexible and easiest to install. The enclosures are constructed in NEMA-4 style and the integral door meets the NEMA-3 and 3R ratings for protection against dirt, rain, sleet and snow.

Designed to mount a variety of control panels including hard switches, elastomeric pads, touch screens, IPS plates and infrared pickups. The square shape allows mounting in any orientation so the door can swing left, right or up.

The OWB-500P has Safe, Secure Control Panel Mounting, Low Profile Cover, Locking Cover Door with Key, Blank Plates for custom mounting, Surface or Flush mounting kits available.

These units are made in the USA, and are manufactured in a lead-free process for a “Green” environment.

### ORDERING INFORMATION

OWB-500P-SM SURFACE MOUNT  
OWB-500P-FM FLUSH MOUNT

### FEATURES

- Safe secure control panel mounting
- Suitable for NEMA-4 outdoor use
- Arrangeable internal brackets
- Low profile cover
- Locking cover door with key meets NEMA-3 and -3R ratings
- Surface or flush mount models available
- Large selection of OWB models available
- Blank plates for custom mounting
- Ganged versions available (Consult factory)
- Equipped with a LITE-it

### APPLICATIONS

- Tiki Bars
- Hotels
- Conference Centers
- Airports
- Arenas
- Open Cabanas
- Stadiums
- Pool Decks
- Residential
- Theme parks
- Houses of Worship
- Schools
- TV & Broadcast Media
- Restaurants

### LIGHTS THE WAY

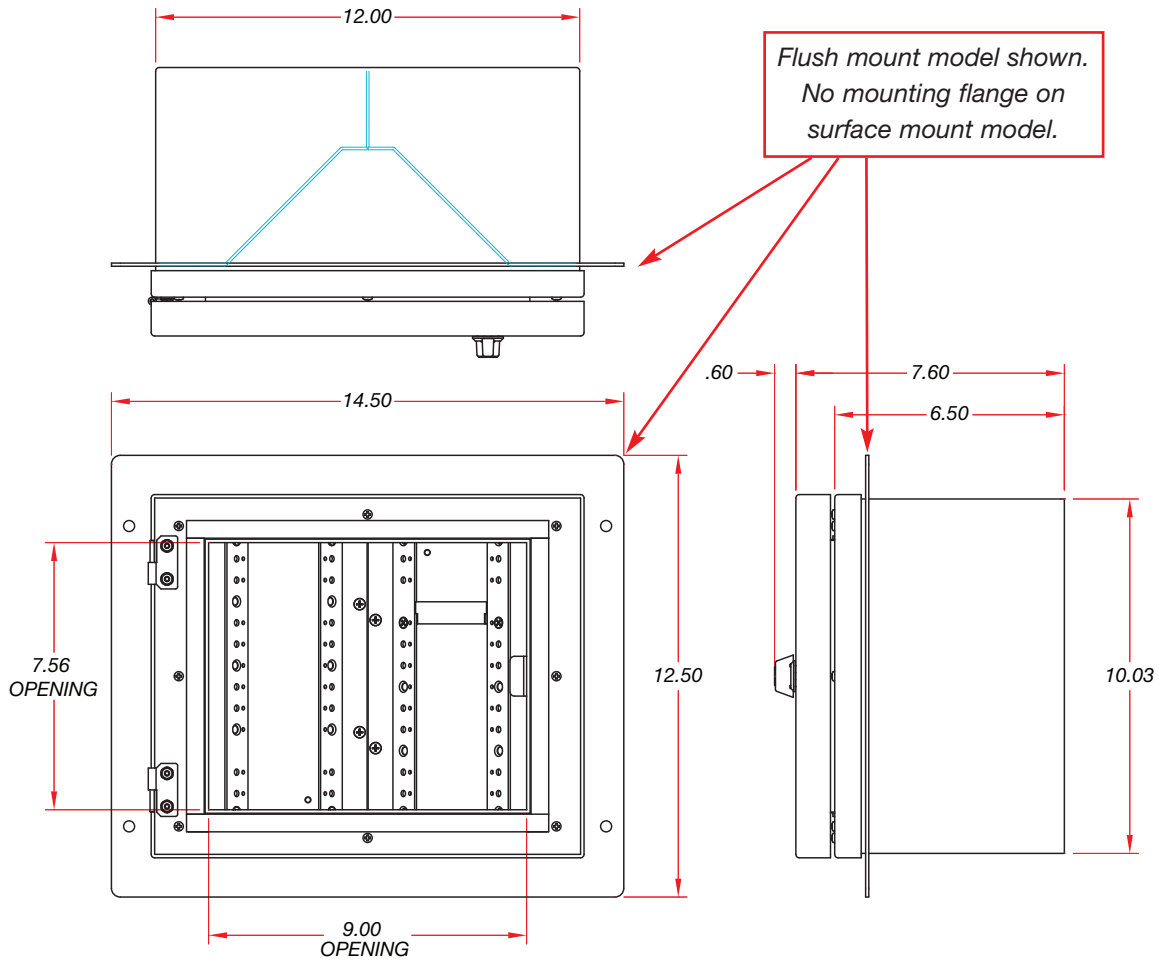
Every OWB-500P is equipped with a LITE-it. This allows the user a safe assist when connecting in a dimly lit area.

# FSR

244 Bergen Boulevard, Woodland Park, NJ 07424  
Phone: 973.785.4347 · Fax: 973.785.4207  
Web: [www.fsrinc.com](http://www.fsrinc.com) · E-mail: [sales@fsrinc.com](mailto:sales@fsrinc.com)

LIT1609

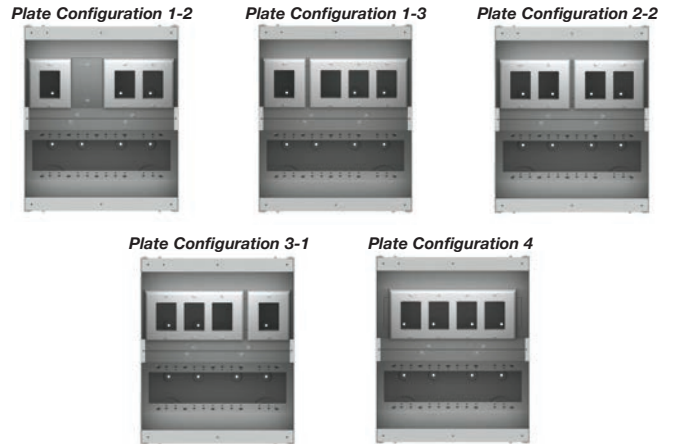
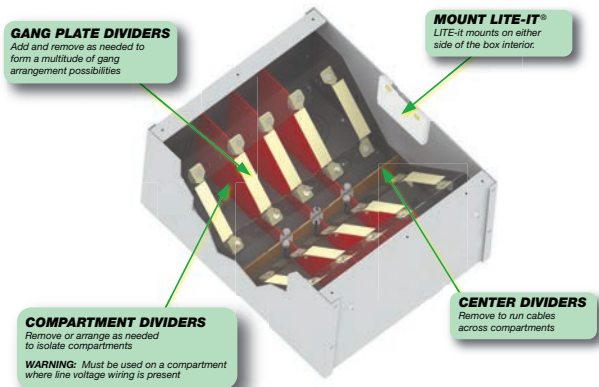
# OWB-500P DIMENSIONS



**OWB-500P**  
DOOR NOT SHOWN ON FRONT VIEW

# "TRANSFORMABLE" BOX

The box contains two identical brackets and either side can be configured as shown using the included parts.



\*Decora plates shown for reference only.



244 Bergen Boulevard, Woodland Park, NJ 07424  
Phone: 973.785.4347 · Fax: 973.785.4207  
Web: www.fsrinc.com · E-mail: sales@fsrinc.com

Specifications are subject to change without notice.