



### ATTENTION - READ THIS FIRST!

The following sections describe the preparation, installation and setup of the HPX-1600 Hydraport Base Assembly, using the HPX-AC-TK Hydraport Installation Tool Kit (FG559-90).

**Note:** Read these instructions in their entirety before beginning the installation. The installation requires specific steps to be performed in specific order.

The following table lists the components of the HPX-AC-TK Hydraport Installation Tool Kit:

HPX-AC-TK Hydraport Installation Tool Kit (FG559-90)	
Quantity	Description
(1)	HPX-AC-TMPLT 559-91 router template
(4)	Mounting Strips <b>Note:</b> The Mounting Strips are manufactured by 3M™. The 3M part number is "17021P".
(1)	Router bit (Freud 12-128 or Whiteside 1072)
(1)	Guide Bushing (Woodcraft 144693)
(1)	Lock Nut (Woodcraft 144696)
(1)	This Installation Guide

**Caution:** This installation kit requires specific woodworking skills. This installation should be performed by an experienced person, comfortable with these type of woodworking operations. Improper use of this tool kit may result in damage to the mounting surface. AMX is not responsible for damage caused by improper use of this tool kit

A typical installation will include several of the available modules. Each of these modules has specific instructions for terminating their rear connections. Refer to the installation guide for each appropriate module during the installation of the Hydraport system.

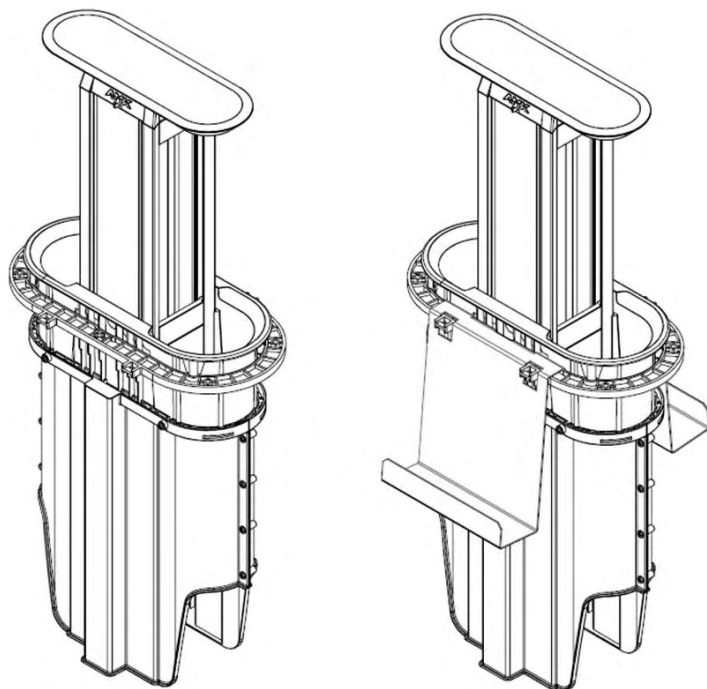


FIG. 1 ¾ View of Hydraport Base Assembly

### 1) Select a Suitable Location For the HPX-1600

Note the space requirements for installing the system (FIG. 2).

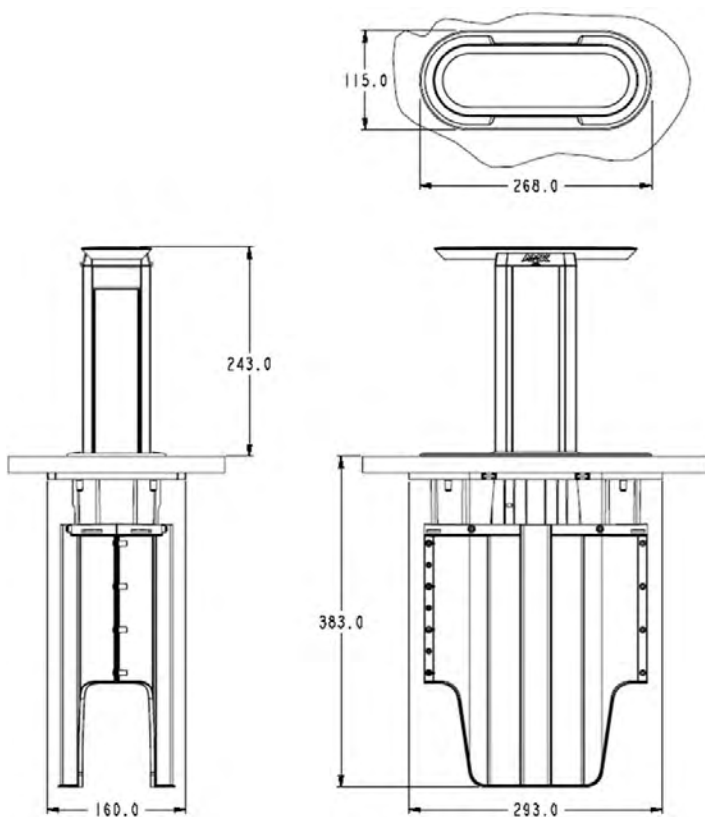


FIG. 2 Hydraport System Space Requirements

- Note that the Hydraport system requires a mounting surface from 19mm (.75in) to 50mm (2.0in) thick.
- Note that the Hydraport system requires at least the following amount of space below the mounting surface to install (see FIG. 2):  
383mm (15.08") height below surface  
293mm (11.54") width  
159mm (6.26") depth
- If the system is to be mounted within a column, pillar or other enclosed space below the mounting surface, please note that final assembly and termination will require the installer to have access to this space below the mounting surface.

Care should also be taken to ensure that the system does not interfere with the normal use of the workspace. For example, on a table or work surface, ensure that the system does not interfere with the user's legs when they are seated at the table.

Even when the system is deployed in the up position, the mounting system and shields occupy the entire space requirement below the table.

## 2) Cut the Hole In the Mounting Surface

Use the HPX-AC-TK (FG559-90) and a suitable router with ½" arbor to create the hole in the mounting surface.

FIG. 3 provides the hole cutout dimensions for reference:

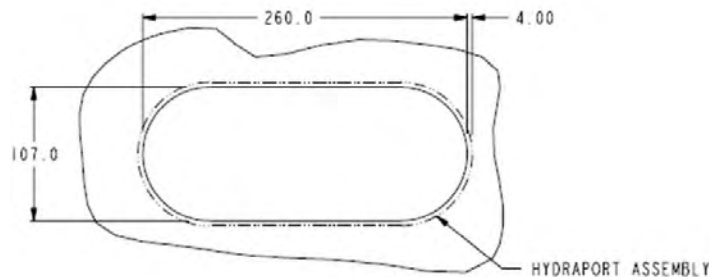


FIG. 3 Hole Cutout Dimensions

1. Carefully measure the tabletop or other mounting surface to locate the desired position of the Hydraport unit.
2. Apply mounting strips or other appropriate double sided tape to the bottom surface of the router template, making sure that the rounded edges of the mounting strips protrude slightly beyond the edges of the template (see FIG. 4).
3. Use the alignment marks scribed on the template to align the template properly on the mounting surface (FIG. 4).

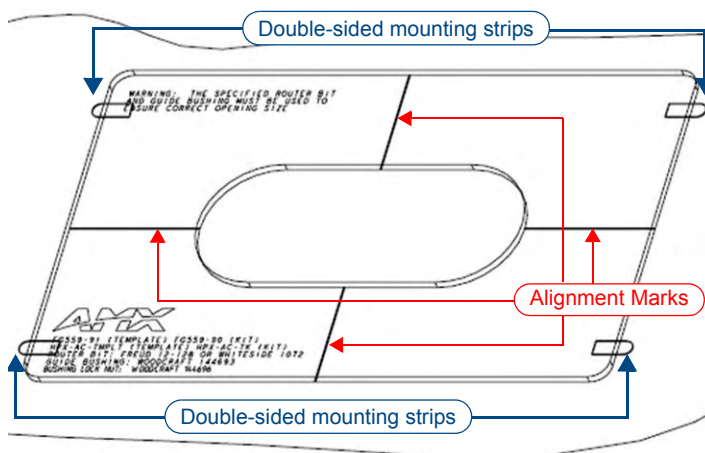


FIG. 4 HPX-AC-T Router Template

- Note that due to the guide bushing and router bit, the final cutout will be smaller than the opening in the template. The cutout in the mounting surface will be offset to the inside of the template opening by 1/8th in on all sides.
- Note both the position and orientation of the template relative to the table top or other mounting surface.
- Note that very little clearance exists between the Hydraport assembly and the hole cutout in the mounting surface. Take care to align the cutout carefully with the edges or other appropriate features in the table or mounting surface. If the cutout is misaligned, the installed unit will be misaligned.

**Caution:** Ensure the template is held securely on the mounting surface. If the template moves during the cutting process, the cutout will be enlarged and will likely exceed the trim bezel of the Hydraport base assembly, requiring extensive repair to the mounting surface.

4. Install the router guide bushing into the base of a suitable router.
  - The router should be equipped with a ½ in collet.
  - Install the router bit into the router with an appropriate portion of the bit exposed below the guide bushing.
5. Switch the router on and carefully lower (plunge) the router bit into the mounting surface within the template opening.
6. Move the router against the template opening such that the guide bushing follows along the template opening.
7. Carefully follow the template opening with the guide bushing in a clockwise fashion such that the cutting action of the router bit is acting against the motion of the router.
8. Make several passes with the router, guide bushing and router bit.
9. Lower the router bit in small increments to remove a suitable amount of material on each pass.

**Caution:** Trying to cut too deep in any one pass may result in damage to the mounting surface.

- Take care to ensure that the top surface of the mounting surface is not damaged beyond the width of the trim bezel as the cutout is made.
  - Make sure the bit or cutting tool used is appropriate for the material to be cut and will not tear or chip the top surface.
  - AMX does NOT recommend using a Jigsaw to make the final cutout.
  - Note that the process of making the cutout will create substantial dust and prepare the environment appropriately.
10. Finally, remove template by pulling firmly on the rounded edges of the double-sided tape mounting strips until they release from the tabletop and template.

### Additional Documentation

For additional information and detailed installation instructions for the HPX-1600 Base Assembly, refer to the *HPX-1600 Installation Guide*, available to view and download from [www.amx.com](http://www.amx.com).

