

FLEX-LT

Room Control at your fingertips



Bezel also
available in black

FLEX-LT

FSR

Control Products Group

DESCRIPTION

The Flex-LT is a self-contained control system that has a vast number of features and a price point that everyone can afford.

The Flex-LT mounts in a wall or sits on a desk and presents the user with an easy-to-use and understand color touch screen. Through the touch screen the user can choose what source is being displayed, change the volume, control the various sources, turn lights on and off, raise or lower the shades or screen and much more.

Using the built in scheduler, the Flex-LT can automatically shut off displays that have been accidentally left on when the room is not in use. It can also alert the support staff if there is an issue in the room such as the lamp life getting too high in order to reduce the down time of the room.

The Flex-LT configuration utility features an easy-to-use method to get the most out of the system. The contractor is presented with an easy to follow drag 'n drop programming methodology; no need to learn another programming language. Flex-LT eases device control by offering IR libraries or if a library is not available, the Flex-IR learner is a snap to use. Serial libraries are also available or can be entered in either ASCII or Hex.

The Flex-LT makes life easy — Easy-to-Use, Easy-to-Program, Easy-to-Afford.

* Check back box clearance to ensure proper fit.
Units require mounting in a plastic back box or oversized metal back box.

TARGET MARKETS

- K-12 Classrooms
- University Lecture Halls
- Boardrooms
- Meeting Rooms
- Conference Rooms

FEATURES

- 3.5" Diagonal Color LCD Touch Screen
- 2 Serial Ports, 4 on FLEX-LT200
- 2 IR Ports, 4 on FLEX-LT200
(Each Can Control up to 4 Devices)
- IP Port on selected models
- Built In Clock / Calendar with Scheduler
- Multi Command Scripting Conditionality
- "Power over Ethernet capability"
on models with an ethernet port



FSR Inc.

244 Bergen Boulevard, Woodland Park, NJ 07424

Phone: 973.998.2300 · Fax: 973.785.4207

Web: www.fsrinc.com · E-mail: sales@fsrinc.com LIT1273L

SPECIFICATIONS

Serial Ports (RS-232)

Speed: 2400-115,200 bps (Ports 1,2,3)
2400-57,600 bps (Port 4)
Pins: TX, RX and GND
Connector type: Screw terminal

IR Ports

Connector type: Screw terminal

I/O Ports (FLEX-LT200, -LT300 and CT6)

Output: open collector, current limited to
100mA, (24VDC max)
Input: VIH_MIN = 5VDC, VIH_MAX =
24VDC, VIL_MAX = 0.4VDC
Connector type: Screw terminal

Ethernet Port (FLEX-LT200, -LT300, CT6)

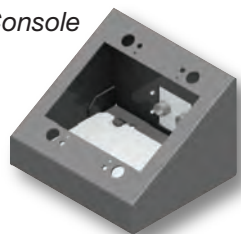
Type: 10/100BASE T/X
Compliance and supported features:
Compliant with IEEE 802.3/802.3u
(100BASE-TX)
Compliant with ISO 802-3 / IEEE 802.3
(10BASE-T)
Supports Auto-negotiation
Supports Automatic polarity detection
and correction
Supports HP Auto MDI/MDI-X
(no crossover cables required)
Protocols TCP/IP, UDP
IP Port persistent connections -up to four (max).
No restriction on other types of ethernet
connections
Connector type: RJ-45

Power

Local adapter
Voltage: 12VDC
Current: 500mA
Power supply included
Connector type: Screw terminal

DSKB-2G Desktop Console

Where FLEX-LT desktop mounting is preferred, the DSKB-2G Desktop Console provides 45 deg angle viewing and convenient access to the touch panel.



Power over Ethernet (PoE), (FLEX-LT200, -LT300, CT6)

Compliant with IEEE 802.3af (Class I device)
Support local power adapter OR-ing for redundancy
(local adapter preference)
Unit can be powered from an 802.3af compliant PoE switch (not provided)
Unit can be powered from an 802.3af compliant PoE PSE adapter (i.e. midspan injector).
Not included (optional accessory).

FLEX-LT300 – The LT300 is another specialty member of the Flex Family. The LT300 is basically an LT-200 in a box without a touchscreen. The LT300 can be mounted in a rack or Ceiling Box and connected to all of the devices that need to be controlled. The user interface to the LT300 is provided either by a FLEX-LT200 or the Flex Remote Windows application.



A “must have” companion module for the **FLEX-LT**, the **K-10D** relays can be driven from the FLEX-LT low level GPIO output. These handy boards offer a quick, simple method to provide ground closures to devices that require relay control voltage such as screen controls or projector lifts. The K-10D “5-pack” includes the “breakaway” relay modules and hook-and-loop mounting strips.



MUD-2G

The MUD-2G Mud Rings are the perfect installation accessories when using all AV interfaces, control devices and input plates. The MUD-2G is a formed extra wide 4” mud ring with square corners for mounting large active electronic devices. See Lit 1588 for more information.

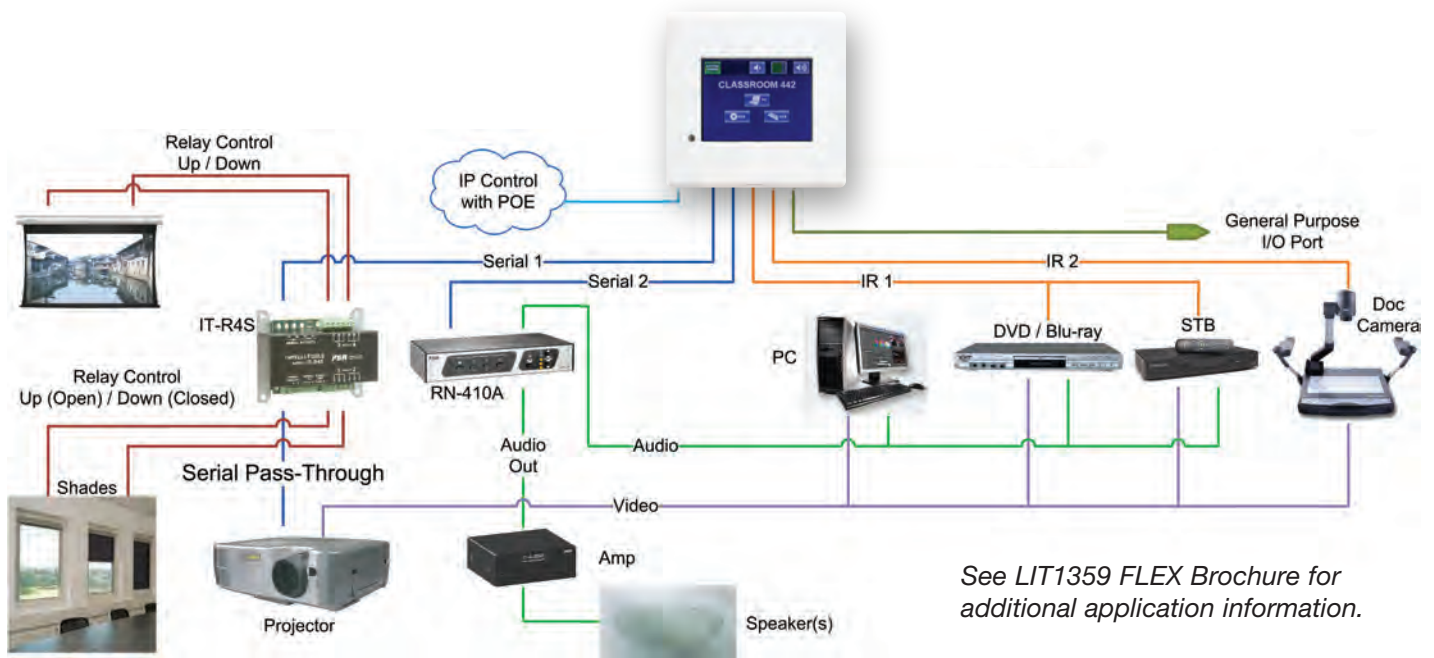
**MUD-2G-50
MUD RING
1/2” depth**



**MUD-2G-63
MUD RING
5/8” depth**



SYSTEM DRAWING



ORDERING INFORMATION

Item #	Part #	Description
18087	FLEX-LT200	3.5" Color Touch Control System w/ IP, 4 Ser, 4 IR, 4 I/O
18088	FLEX-LT200-B	3.5" Color Touch Control System w/ IP, 4 Ser, 4 IR, 4 I/O (Black)
17237	FLEX-LT300	Control System "Brain" w/ IP, 4 Ser, 4 IR, 4 I/O - Module
17095	FLEX-PRGM	Programming Kit for FLEX w/ IR Learner
17181	IR-EC3-6	IR Emitter w/ 6' Cable
18144	CT6-FLEX-BLK	Flex CT6 Table Box with 4 Serial , 4 IR, 4 GPIO and 1 Ethernet Port - Black
18145	CT6-FLEX-ALM	Flex CT6 Table Box with 4 Serial , 4 IR, 4 GPIO and 1 Ethernet Port - Aluminum
17296	K-10D	Relay Module 5-pack

* Check back box clearance to ensure proper fit. Units require mounting in a plastic back box or oversized metal back box.

(-B) = Black

Number and Type of Ports on Each Flex Model

Model	Serial Port	IR Port	I/O Port	Ethernet Port
FLEX-LT200	4	4	4	1
FLEX-LT300	4	4	4	1
CT6-FLEX	4	4	4	1

SELECTING YOUR FLEX

Model #	Screen	Serial Ports	IR Ports	GPIO Ports	Network
FLEX-LT200	3.5" Color Touchscreen	4	4	4	10/100 w/PoH
FLEX-LT300	N/A	4	4	4	10/100 w/PoH
CT6-FLEX Table Box	3.5" Color Touchscreen	4	4	4	10/100 w/PoH

Remote Control

FLEX LT-300

FLEX-LT300 – The LT300 is another specialty member of the Flex Family. The LT300 is basically an LT-200 in a box without a touchscreen. The LT300 can be mounted in a rack or Ceiling Box and connected to all of the devices that need to be controlled. The user interface to the LT300 is provided either by a FLEX-LT200 or the Flex Remote Windows application.

FLEX MOBILE APP

Check out our Flex App available at the App Store



For iPad®, iPhone®, Android® and Windows® phones and tablets.

Available from the app store.

FLEX CONTROL BUILDER

ALL NEW!



- Projects can be saved and retrieved to any location
- Drag 'n Drop compatibility with Windows® Explorer
- Custom and Resizable buttons and graphics
- Built-in Diagnostics
- Project History
- Single click Firmware and Software updates
- Full size Clock Displays and Timers on Splash Screens, smaller on other screens
- Update Firmware and load projects to multiple panels or all panels as a batch request
- Up to 16 Bar Graphs with simplified setup

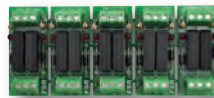
ACCESSORIES



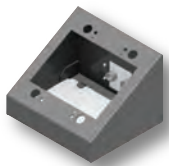
8 Ohm and 70 Volt Amplifiers



Serial Controlled Relay and Volume Modules



Adds relay control capability to FLEX systems for automated window treatments, lighting, etc.



Desktop Mounting Brackets



Locking Wall Plate Covers



Mud Rings in 1/2" & 5/8" Depths



Specifications are subject to change without notice.

FSR Inc.

244 Bergen Boulevard, Woodland Park, NJ 07424

Phone: 973.998.2300 · Fax: 973.785.4207

Web: www.fsrinc.com · E-mail: sales@fsrinc.com

LIT1273L