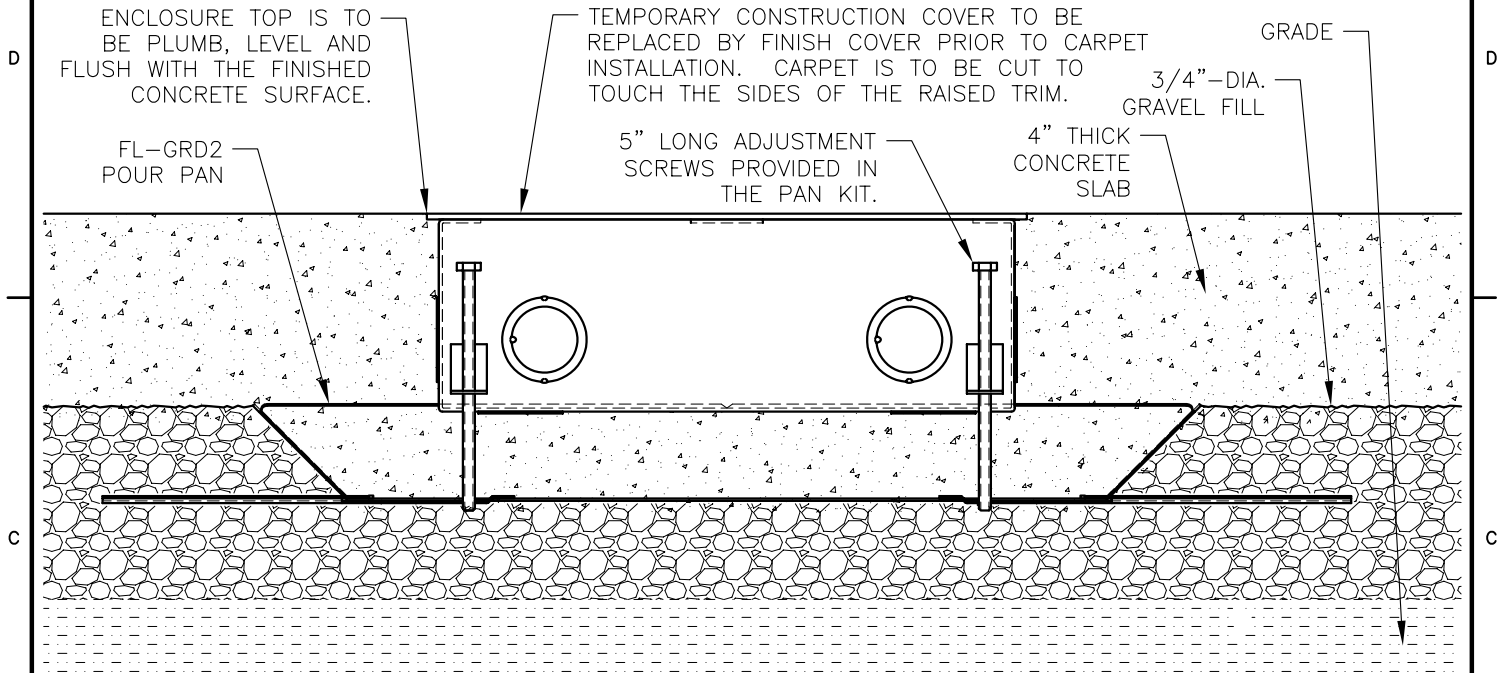
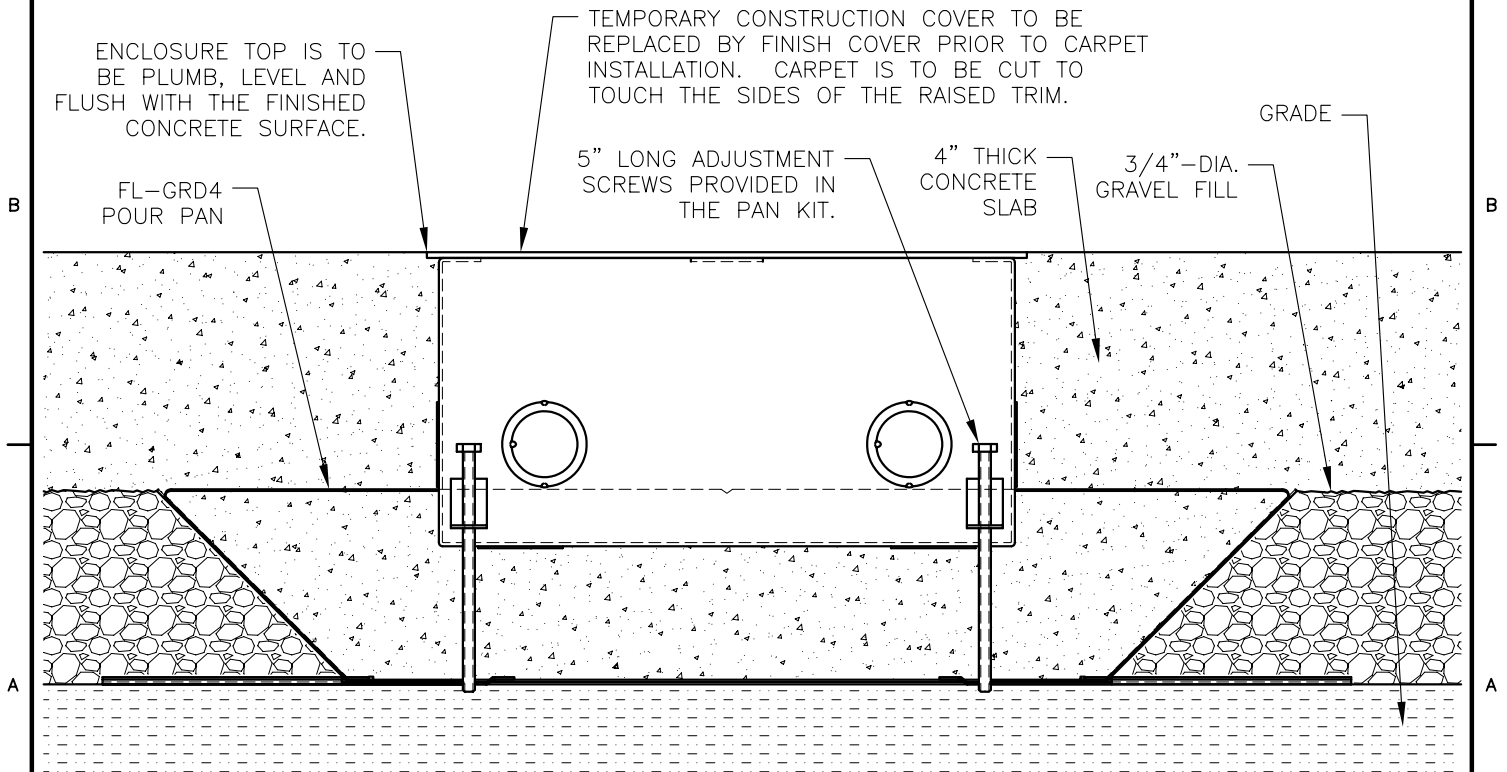


TYPICAL INSTALLATION USING THE FL-GRD2



TYPICAL INSTALLATION USING THE FL-GRD4



<b>FSR</b> <i>INC.</i> 244 BERGEN BLVD. W. PATERSON, NJ 07424 TEL. (973) 785-4347 FAX (973) 785-3318	TITLE: FL-GRD2/FL-GRD4 INSTALLATION		
	DRAWN BY: JRE	DATE: 07/24/06	REV: -
	DWG#: FL-GRD2	PAGE: 1 OF 2	SCALE: 1:4

CONCRETE PAN ASSEMBLY: FL-GRD2/FL-GRD4

HOLD-DOWN PLATE

DOWN TO LOCK

PAN/HOLD-DOWN PLATES ASSEMBLY:

INSERT THE TABS OF THE HOLD-DOWN PLATE INTO SLOTS IN THE PAN, AS SHOWN, AND PUSH THE PLATE INWARDS UNTIL IT STOPS.

INSERT THE TIP OF A FLAT-BLADED SCREWDRIVER INTO THE OPEN GAP AT THE INSIDE CORNER OF THE PAN. PUSH DOWN ON THE SCREWDRIVER HANDLE; THIS WILL BEND THE NARROW METAL STRIP ENOUGH TO CAPTURE AND LOCK THE HOLD-DOWN PLATE IN PLACE.

REPEAT THIS PROCEDURE WITH THE SECOND PLATE; THE PAN ASSEMBLY IS NOW READY FOR USE.

**FSR** *INC.*  
244 BERGEN BLVD.  
W. PATERSON, NJ 07424  
TEL. (973) 785-4347  
FAX (973) 785-3318

TITLE: FL-GRD2/FL-GRD4  
INSTALLATION

DRAWN BY: JRE DATE: 07/24/06 REV: -  
DWG#: FL-GRD2 PAGE: 2 OF 2 SCALE: 1:2