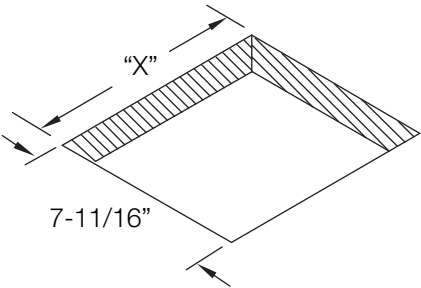


BYRNE™

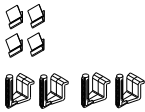
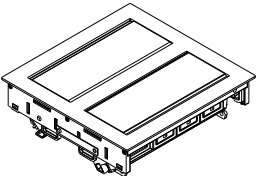
INSTALLATION INSTRUCTIONS FOR M2XB

Install data jacks as described in the installation instructions provided with data adapters, BE03655

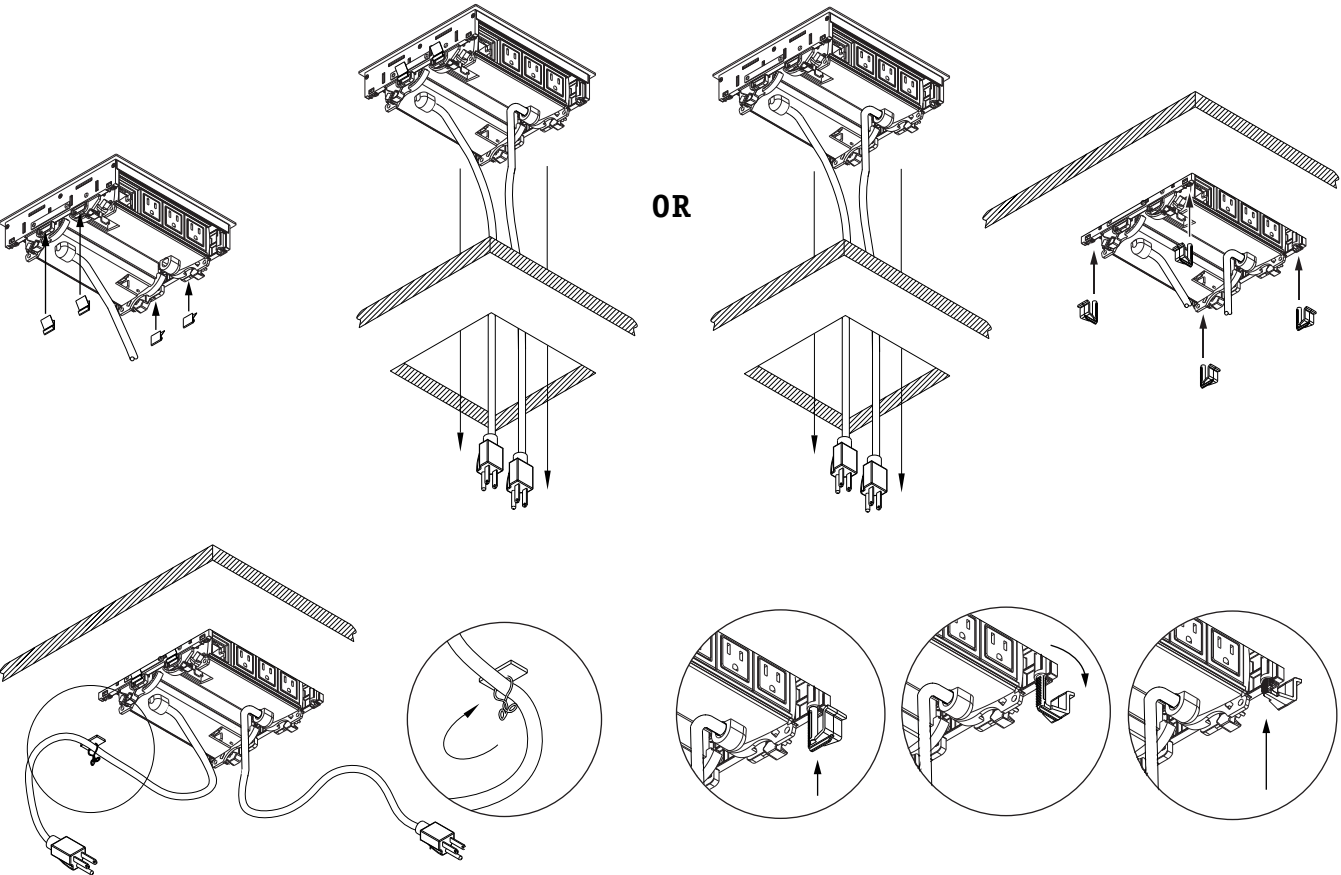
M2X	Windows Per Side (Back to Back)	"X" Dim.
BE04076-2X	2 Windows	5"
BE04076-2X	4 Windows	8"
BE04076-2X	5 Windows	9-1/2"
BE04076-2X	6 Windows	11"

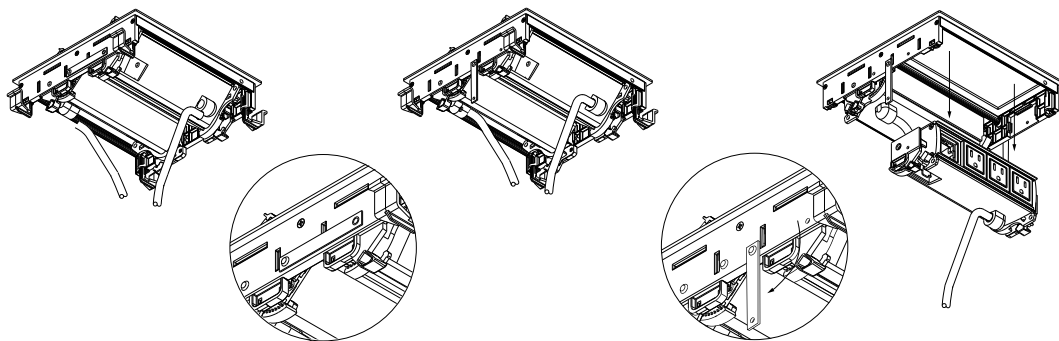


Ports Per Side (Back to Back)



Mounting options





To remove and reassemble power units from grommet assembly. Note: For corded version only.