

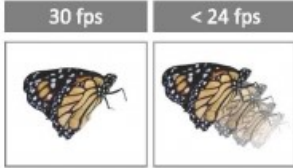
## Anti-Reflection

With the Lumens™ side lamp gooseneck design, the direction of the light source can be adjusted according to the environment in order to prevent reflections.



## Instant Image Adjustment

An Auto Tune button adjusts the clarity, brightness, and color according to the actual environment automatically. A new image process technology speeds up its function so that the image adjustment becomes more efficient.



## Extremely Smooth Dynamic Image

With 30fps capture every tiny movement during playback without delays.



## Joint-free Gooseneck

Highly flexible and joint-free gooseneck design ensures smooth quality without vibration, easy to use, and a 360° viewing angle.

## Specifications

<b>Image Sensor</b>	1/3 CMOS Color Image Sensor	<b>Lamp</b>	LED side lamp supported by gooseneck
<b>Total pixels</b>	3.25MP	<b>Power Supply</b>	Internal Power Supply, 100-240VAC
<b>Zoom</b>	20x optical zoom	<b>USB Image Transmission</b>	USB 2.0 (480 Mbps) high speed transmission
<b>Digital Zoom</b>	12x	<b>Video/Audio Recording</b>	One touch button records image and sound synchronously
<b>Mechanical Zoom</b>	11x	<b>Built-in Microphone</b>	Yes
<b>Close-up</b>	2cm (0.78")	<b>Image Capture</b>	Single or continuous capturing
<b>Shooting Area Max.</b>	400 x 300 mm(15.7" x 14.8")	<b>Auto Tune</b>	Yes, one button for optimization image
<b>Output Resolution</b>	XGA, SXGA(1280x960), WXGA, 1080p	<b>Image Rotation</b>	0°, 180°, flip, mirror
<b>High Color Reproduction</b>	$\Delta E^*ab$ (mean): 14.8	<b>Anti-Theft</b>	Kensington anti-theft lock device
<b>SNR</b>	51dB	<b>Free Lumens™ Software</b>	Supports PC Windows 10, 8, 7, XP, Vista and Mac OSX, Chrome OS ; iOS, Android APP ; WIA & TWAIN interface
<b>Sharpness</b>	MTF 937 line	<b>Included Accessories</b>	Power cable, VGA cable, USB cable, remote control, microscope adapter
<b>Frame Rate</b>	30fps		

## User Interface

