

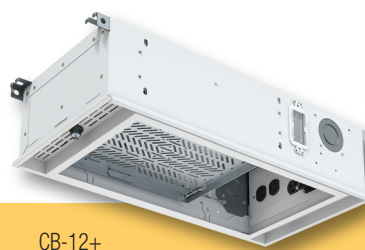
CEILING SOLUTIONS



Protect and Secure your Infrastructure Connections

FSR Works For You

CB+ SERIES CEILING BOXES



CB-12+



CB-22+



CB-324+

The CB-12+, CB-22+, & CB-324+ series ceiling boxes

The CB-12+, CB-22+, and CB-324+ series ceiling boxes from FSR offer advanced solutions for efficient and secure AV equipment management. Each model in the “+” series is engineered to enhance installation convenience, optimize internal space, and ensure the protection of valuable components.

The CB-12+ series features a compact design with integrated threaded rod mounts, simplifying installation and improving stability. The series also includes a lockable cover latch for enhanced security and quick access. Inside, a consolidated fan and prewired AC arrangement maximize internal space, reducing clutter and simplifying wiring. The box comes with brush-lined low-voltage access plates for efficient cable management and a dual-tilting equipment shelf for versatile mounting and servicing.

The CB-22+ series builds on these features with increased load capacity and a larger dual-tilting mounting shelf. The enclosures include repositionable 2RU rack rails, a removable shelf for additional flexibility, and a new lockable cam lock access door for improved security and accessibility.

The CB-324+ series is designed for larger, more complex AV installations. Its oversized chassis accommodates equipment up to 20 inches deep, with dual-tilting, removable 4RU racks for easy installation and maintenance. Front and rear rack rails offer versatile mounting, while the optional temperature-regulated fans and dual power input capability ensure reliable operation. Additional features include a liftoff access door for quick service, cable lacing provisions for neat management, and an optional door tamper switch for enhanced security.

CB-12+



CB-22+



CB-324+



Ceiling Boxes showing the ETL logo
are approved to UL60950-1 and
UL2043-2006 Standards.



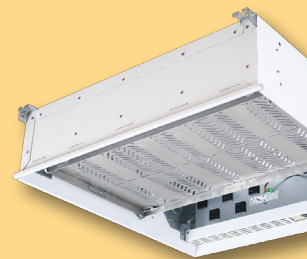
CB-22+ SERIES



The CB-22+ line of ceiling boxes has been reimagined with exciting new features. The "+" series ceiling boxes include integrated threaded rod mounts, lockable cover latch, larger mounting shelf, low voltage access plates with brushes, and a load rating that's been increased to 100 pounds for the projector pole models.

The integrated mounting point allows use of threaded rod without additional hardware kits. Pole mount unit include decorative pole rail cover plates, and a solid door is available on all models to eliminate the need to cut ceiling tiles. The projector pole may be mounted in any of 3 predetermined positions and trimmed with the included plates, or if finer pole adjustment is needed, ceiling tile may be cut to size.

The streamlined access door and hinge allow for easier removal and installation of the door. The attached quick-disconnect safety cable prevents the cover door from detaching completely from the box. The new lockable latched access door provides security while allowing easy access to the equipment in the box.



CB-22+ shown closed

CB-12-PTF



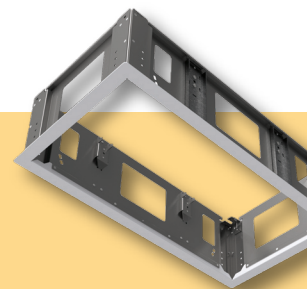
The CB-12-PTF ceiling enclosure ensures the safety of the PoE nodes from the start. The CB-12-PTF can be mounted in any location such as, acoustical tile ceilings, hard deck ceilings using CB-SR12 or enclosure mounting with either a threaded rod or a cable kit. The ceiling enclosure holds 12 Platformatics Nodes – PoE-LN2, has a removable card cage and has venting on the sides and on top to keep nodes within the permissible operating temperatures. Having the PoE nodes already installed in our ceiling enclosure will help you reduce installation and service time.



CB-12-PTF

CB SERIES DRYWALL MOUNTING FRAME KITS

If you want to mount our popular ceiling boxes in a drywall ceiling, you need our frame kits. The CB-12-SR and CB-22-SR drywall mounting frames are expressly designed to easily mount FSR's 2' x 2' (CB-22) and 1' x 2' (CB-12) Ceiling Enclosures. The mounting frame kits can be installed in the ceiling opening using threaded rod, stranded wire cable, or screws through specific holes in the sides of the unit. The ceiling box can then be hung vertically, via the included cables, while the equipment is mounted and wired allowing convenient access to the components and cables. The ceiling box can then be lifted into the frame and locked into place. The ceiling box interior can be accessed in the same way for future re-cabling and service. Ceiling boxes and frames are ordered separately depending on the type of ceiling.



CB-12-SR

CB-224



Plenum Rated

The CB-224 series is a 2' x 2' high capacity ceiling box designed to fit into a standard 2' x 2' or 2' x 4' drop ceiling. It features a drop-down 4RU cage for easy installation and mounting of rack equipment. Cable guides for service loops are provided to allow the equipment to be connected in the down position and then slid up into place. The drop-down cage features pneumatic assistance to counter some of the weight of the equipment installed. The CB-224 has 6 AC outlets in the box and 1 in the room. A master power switch is accessible from the room.



CB-224 shown closed

The 'P' or Pole option adds a
The 'S' or Smart option adds
specific outlets, allowing the



CB-22+ with Dual Tilting Shelf to access punch panels



CB-22+ with Dual Tilting Shelf to access cabling



CB-22+ Repositionable 2-RU Rack Rails

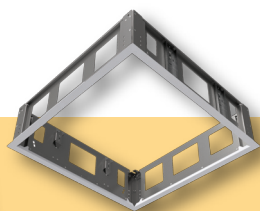


CB-12-PTF with acoustic ceiling tile

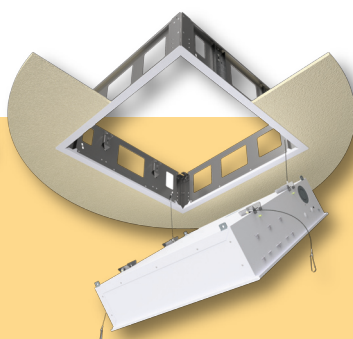


CB-12-PTF 90° mount in soffit

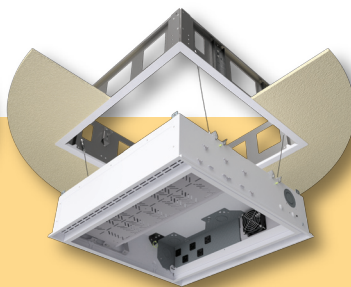
Frame Kits / CB-22-SR



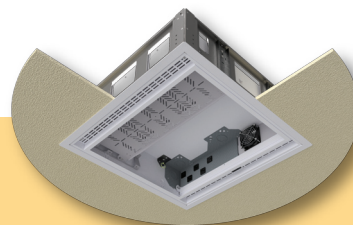
CB-22-SR



Anchored

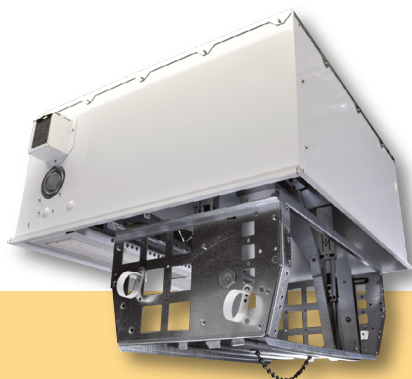


Lowered



In place

CB-22-SR Kit



CB-224 shown open



CB-224P shown with
equipment enclosure extended



CB-224P shown closed with
optional projector pole adapter

projector pole adapter. This allows cabling to pass from inside the ceiling box down the pole and to the projector, providing a nice clean installation. cooling fans and the Smart Power module. This module allows the power in the box to be either remotely controlled or switched based on the current draw of power in the box to be switched on and off automatically with the projector.

MODULAR LINX SYSTEM PRE-WIRED CEILING BOXES

With the MLS pre-wired ceiling boxes, the electrical contractor can install and power the MLS starter cable at any time during the initial construction phase. The CB-MLS eliminates coordinating return visits to the site to connect AC to the ceiling box after the AV contractor completes hanging the unit.

CB-12-MLS



CB-22-MLS

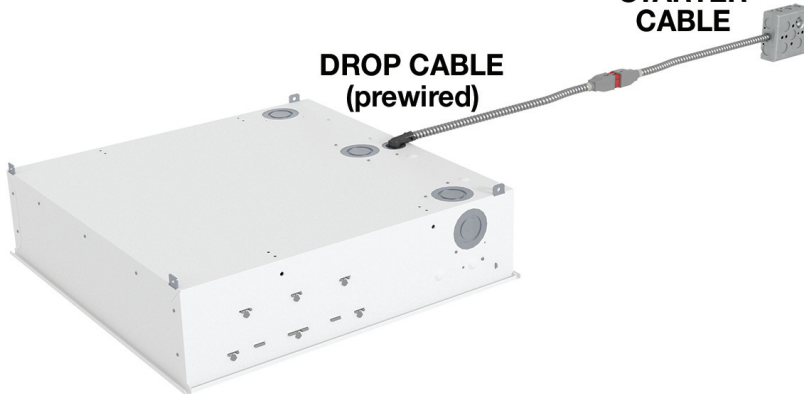


CB-224-MLS



STARTER
CABLE

DROP CABLE
(prewired)



SKYBOX SERIES

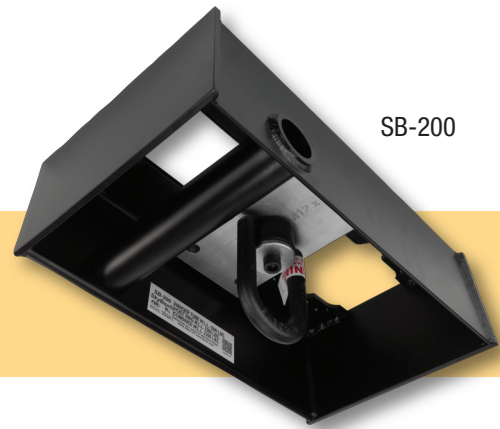
The SkyBox rigging point has been specifically designed to create permanent rigging point for trusses, lighting systems, line arrays and speakers in multi-use architectural environments. The SkyBox handles the rigors of daily staging events while remaining out of view when not in use.

The SkyBox is structurally mounted above the ceiling grid and easily exposed for use by removing the ceiling tile or opening the SB-HATCH doors. When finished, simply return the tile or close the doors and the SkyBox will be hidden from view.

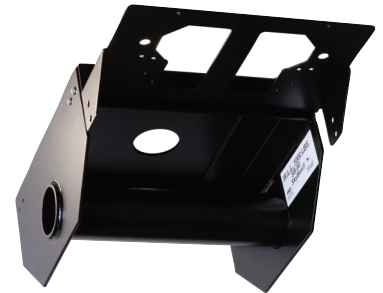
The SkyBox (SB-50) contains an integrated 1.5" pipe which functions as a rigging point for lighting instruments, trusses and speakers. An optionally installed bracket provides mounting for Two 4" Standard 19 series Electrical Boxes to handle your power and control requirements. W.L.L. 1000 LBS.

The SkyBox (SB-200) contains an integrated swivel hoist ring and a 1.5" pipe which functions as a rigging point for lighting fixtures, trusses, line arrays and many other rigging needs. Integrated within the SkyBox are locations for Two 4" Standard 19 series Electrical Boxes to handle multiple locations for your power and control requirements. Tube W.L.L. 1000 LBS, hoist ring W.L.L. 2,300 LBS, combined W.L.L. 2,300 LBS.

The SkyBox Hatch (SB-Hatch) provides bomb-bay door access to any of the SkyBox rigging points. The Hatch provides an architectural pleasing method of access without the need to touch any ceiling tiles.



SB-200



SB-50



SB-Hatch



MADE IN
THE USA



Specifications are subject to
change without notice.



244 Bergen Boulevard · Woodland Park, NJ 07424

800.332.FSR1 · 973.998.2300 · F: 973.785.3318

W: fsrinc.com · E: sales@fsrinc.com

© 2024 FSR, Inc. All Rights Reserved

LIT1413L