

Vaddio™ AV Bridge™ CONFERENCE

HD Media Streaming Solution with Audio Inputs and Outputs for UC Conferencing Applications

Part Numbers:

999-8215-000: AV Bridge CONFERENCE (North America)

999-8215-001: AV Bridge CONFERENCE (International)



Inside Front Cover - Blank

Table of Contents

Overview	4
Unpacking	5
Anatomy of the AV Bridge CONFERENCE	5
Image: Front Panel with Feature Callouts	5
Image: Rear Panel Connector and Features	6
First Time Set-up with the AV Bridge CONFERENCE	6
Diagram: The simple way to look at AV Bridge CONFERENCE	7
Diagram: UC Conferencing Application Example	7
Step-by-Step Installation Instructions	8
Compatibility	8
Table: Supported UVC Resolutions	9
Video Inputs: Supported Formats and Resolutions	9
System Configuration and Programming	10
Web Page Screen Shot Tour:	11
Screen Shot: Login	11
Screen Shot: A/V Configuration Web Page	12
Screen Shot: Streaming	13
Screen Shot: Room Labels	14
Screen Shot: Network Configuration - DHCP	14
Screen Shot: Network Configuration - Static IP	15
Screen Shot: Security	15
Screen Shot: Diagnostics	16
Screen Shot: System Menu	16
Screen Shot: System Confirmation Messages	17
Screen Shot: Firmware Update in Progress	17
Screen Shot: Help Menu	18
Logout:	18
Restoring Factory Defaults	18
Warranty Information	19
Compliance and CE Declaration of Conformity - AV Bridge CONFERENCE	20
General Specifications	21
Appendix 1: Connectors Pin Outs	22
Appendix 2: Vaddio Serial Command API	23
Telnet Format:	23
Command List (Command Line Interface Shell)	24

Overview

The Vaddio AV Bridge CONFERENCE is a room based HD Media Streaming solution enabling IP or USB streaming. Like the original AV Bridge, it's an appliance that "bridges" the room's analog audio and video into a computer (PC or Mac) for UC applications, but with one important distinction. The AV Bridge CONFERENCE has been designed as an HD Encoder with 2-way analog audio to send the near-end audio to the far-end and return the far-end audio to the application or pro mixer with AEC..



The AV Bridge CONFERENCE offers a flexible A/V interface that is controllable with an embedded web server and the current settings are viewable from the front panel menus. It accepts a multitude of video input resolutions from standard definition composite video (480i/NTSC and 576i/PAL) all the way up to HD 1080p/60 in HDMI and YPbPr, including the most relevant wide-screen and 4:3 VESA type PC resolutions (RGBHV or DVI).

The USB streaming functions using MJPEG (Motion JPEG) and standard UVC (USB Video Class) with UAC (USB Audio Class) drivers eliminate the need for installation of custom software drivers on the Host PC. The IP streaming uses RTSP or HLS (Apple's variant on HTTP streaming) and encodes H.264 video with AAC Audio. The Ethernet port also provides access to internal web pages for control, setup, and updating the software.

Use the AV Bridge CONFERENCE in UC conferencing applications to "bridge" video and audio signals into a PC or retrofit existing conference rooms by simply plugging a USB cable into a Host PC or connecting to an IP network.

The AV Bridge CONFERENCE supports high definition encoding of audio and video sources, producing superior quality results at the fraction of the cost of other similar products. It seamlessly integrates with Vaddio's HD cameras, presentation systems, video mixing consoles, and other pro audio products with AEC. The AV Bridge CONFERENCE is an unsurpassable value due to its ease of use, flexibility, and plug & play functionality, really.

Intended Use

Before operating the device, please read the entire manual thoroughly. The system was designed, built and tested for use indoors, and with the provided power supply. The use of a power supply other than the one provided or outdoor operation has not been tested and could damage the device and/or create a potentially unsafe operating condition.

Important Safeguards

Read and understand all instructions before using. Do not operate any device if it has been dropped or damaged. In this case, a Vaddio technician must examine the product before operating. To reduce the risk of electric shock, do not immerse in water or other liquids and avoid extremely humid conditions. Do not connect Power over Ethernet (PoE) cables directly to the RJ-45 ports on the device as damage may result.



Use only the power supply provided with the system. Use of any unauthorized power supply will void any and all warranties.



Please do not use "pass-thru" type RJ-45 connectors. These pass-thru type connectors do not work well for professional installations and can be the cause of intermittent connections, which can result in the RS-232 control line failing and locking up and very bad. For best results please use standard RJ-45 connectors and test all cables for proper pin-outs prior to use.

Save These Instructions

The information contained in this manual will help you install and operate your product. If these instructions are misplaced, Vaddio keeps copies of Specifications, Installation and User Guides and most pertinent product drawings for the Vaddio product line on the Vaddio website. These documents are available from www.vaddio.com free of charge.

Unpacking

Carefully remove the device and all of the parts from the packaging. Unpack and identify the following parts:



Image AV Bridge CONFERENCE shown with provided Rack Ears Attached

For P/N 998-8515-000 AV Bridge CONFERENCE System (North America)

- One (1) 998-8515-000 AV Bridge CONFERENCE HD Audio/Video Encoder
- One (1) Pair of Rack Ears
- One (1) 18 VDC, 2.75 Amp Switching Power Supply with AC Power Cord for North America
- One (1) 6' (1.83m) USB 2.0 Cable, Type-A Male to Type-B Male (black)
- One (1) Set of four rubber feet for bottom of enclosure (if not racked)
- One (1) Install Guide and User Manual

For P/N 998-8515-001 AV Bridge CONFERENCE System (International)

- One (1) 998-8515-000 AV Bridge CONFERENCE HD Audio/Video Encoder
- One (1) Pair of Rack Ears
- One (1) 18 VDC, 2.75 Amp Switching Power Supply
- One (1) Euro Power Cord
- One (1) UK Power Cord
- One (1) 6' (1.83m) USB 2.0 Cable, Type-A Male to Type-B Male (black)
- One (1) Set of four rubber feet for bottom of enclosure (if not racked)
- One (1) Install Guide and User Manual

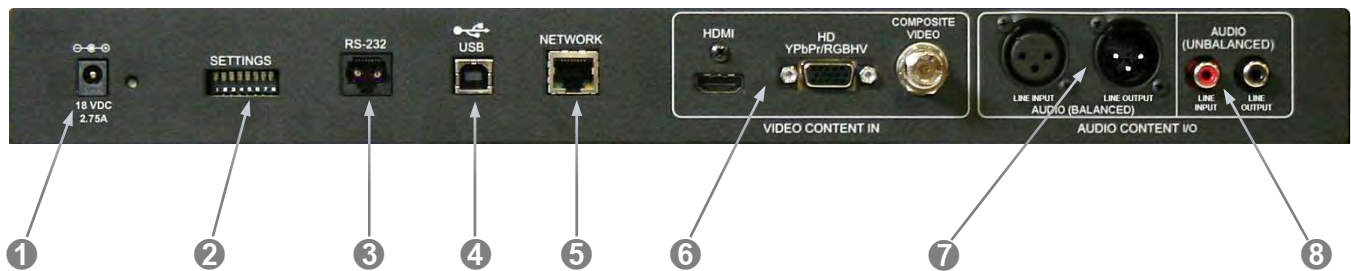
Anatomy of the AV Bridge CONFERENCE

Image: Front Panel with Feature Callouts



- 1) **Video Input Detect:** Blue LED indicator will illuminate validating that an active video input source has been detected by AV Bridge CONFERENCE.
- 2) **LCD Display:** LCD display for menu system - displays configuration information.
- 3) **Menu Navigation Controls:** Rotary navigation knob to access menu items and information on LCD display. Also includes Selection and Cancel buttons for user interface of basic system menus.
- 4) **Mute Controls:** Video mute button stops streaming video to USB and injects color bar image. Audio mute button stops audio from being sent on USB record channel.
- 5) **Audio Level Controls:** Rotary encoder knob to adjust audio input level being sent to USB record channel. Functions as the master volume control for both left and right input channels. Volume increases by rotating clockwise and decreases by rotating counterclockwise.
- 6) **Power/Reset Button:** System reset for the A/V Bridge.
- 7) **Input LED Indicators:** Depicts the current video; HDMI, HD analog or CVBS (composite video) and audio input selection and signal characteristics - Unbalanced (High-Z) or Balanced (Low-Z).

Image: Rear Panel Connector and Features



- 1) **Power Connector:** 5.5mm OD x 2.5mm ID, center positive coaxial connector for supplying power to the device. Use with provided desktop 18 VDC, 2.75 Amp power supply.
- 2) **DIP Switches:** Used to reset device to factory defaults. Setting all dip switches to the off-position will reset the unit to factory defaults on the next power cycle. User will lose all programmed configurations on the factory default operation. Dip switches are available for future features.
- 3) **RS-232:** RS-232 communication port on an RJ-45 connector supporting Vaddio's serial command protocol. Used for interfacing with Crestron/AMX control systems.
- 4) **USB Port:** USB Type-B connector interfaces to the Host PC. AV Bridge CONFERENCE Emulates a USB webcam and USB speakerphone device.
- 5) **Network:** 10/100 Ethernet port supports the embedded web server for configuration and management of the AV Bridge CONFERENCE. The Ethernet port will stream H.264 and AAC audio.
- 6) **Video Inputs:** Video inputs supporting HDMI, HD or SD (SD stands for Standard Definition, NTSC or PAL video formats). The HD connection supports either YPbPr or select wide screen RGBHV resolutions on the DE-15 connector. Video sources can be switched during a USB streaming session.
- 7) **Balanced Audio Input and Output:** Balanced line level (+4dBu) audio I/O on XLR connectors
- 8) **Unbalanced Audio Input and Output:** Unbalanced line level (-10dBV) audio I/O on RCA connectors.

Note: The audio inputs are line level and user selectable between balanced or unbalanced.

First Time Set-up with the AV Bridge CONFERENCE

The AV Bridge CONFERENCE is a complex high definition Audio/Video encoder used as a USB or IP streaming appliance that provides a Plug & Play type interface (or bridge) between traditional A/V room equipment and a Host PC.



The AV Bridge CONFERENCE facilitates the use of PC-Based lecture/capture, recording, editing, and distribution as well as Unified Communications (UC) software within group meeting spaces.

An important feature of the AV Bridge CONFERENCE is the 2-way analog audio I/O that sends the near-end room audio to the far-end and returns the far-end audio to the local room's pro mixer with AEC. The AV Bridge CONFERENCE is the ideal choice for existing rooms as well as new designs.

Diagram: The simple way to look at AV Bridge CONFERENCE

The AV Bridge CONFERENCE “bridges” the A/V signals into the PC for applications like UC conferencing, lecture capture, recording, storage for later playback, editing, distribution and other programs that can manipulate the A/V content. With the 2-way analog audio, the AV Bridge CONFERENCE is perfect for most UC conferencing applications.

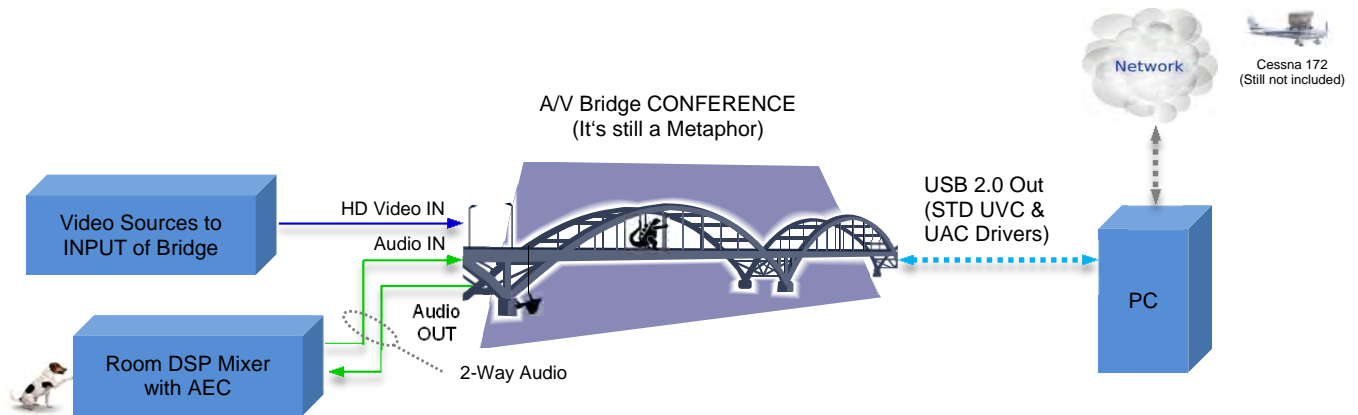
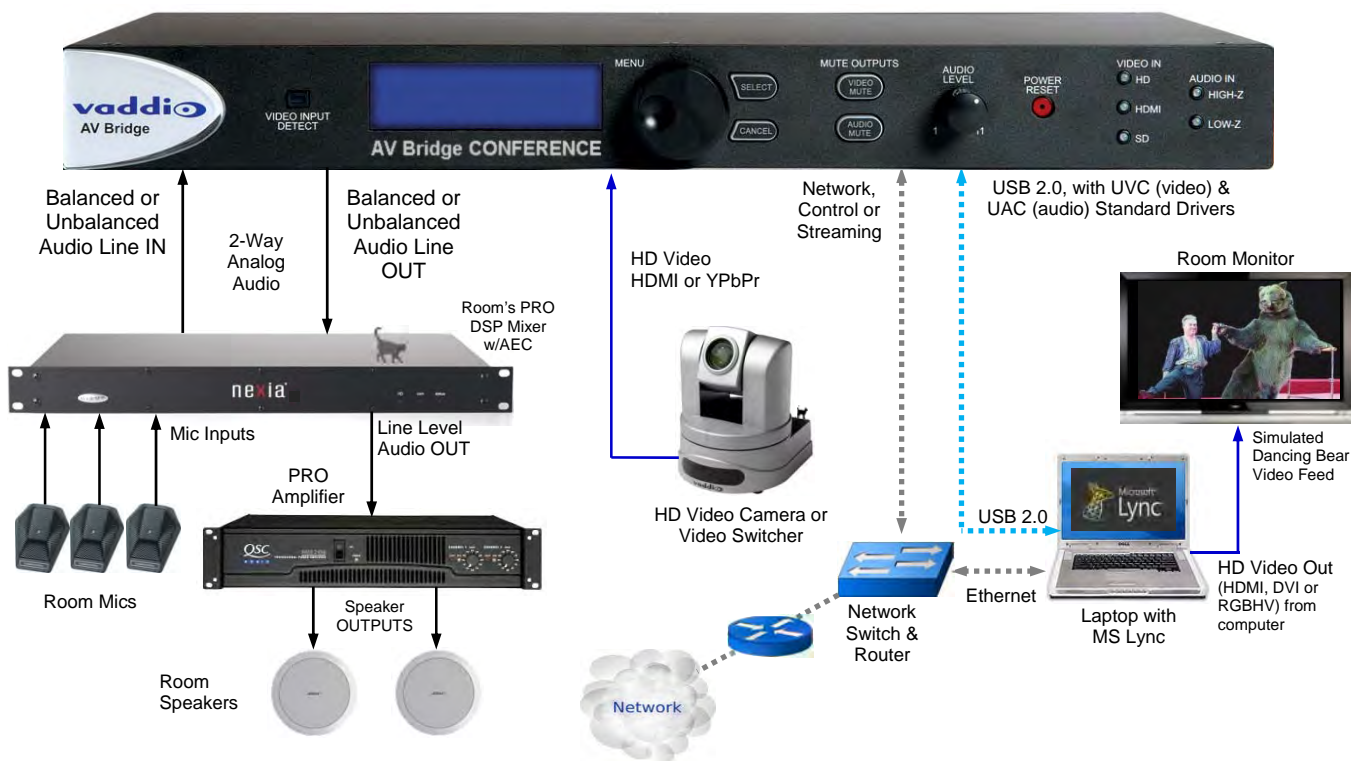


Diagram: UC Conferencing Application Example

This system diagram depicts the AV Bridge CONFERENCE in a UC Conferencing application using an existing or new room audio system (providing for 2-way audio), video source, a PC, network and room monitor. The AV Bridge CONFERENCE will output USB 2.0 streams or IP streams, but not simultaneously.



Step-by-Step Installation Instructions

To install the AV Bridge CONFERENCE, follow the steps below to attach various pieces of equipment.

Step 1: Plug in the 18VDC, 2.75 Amp power supply included with the AV Bridge CONFERENCE system package. The front panel LCD display will illuminate blue when the power is applied. The menu is now active and ready for configuration.

Step 2: Connect the Video Content Source(s) to the AV Bridge CONFERENCE for USB 2.0 Streaming. More than one source can be attached and selected from the front panel or web page menu.

Step 3: Connect the Audio Content Source(s) to the AV Bridge CONFERENCE. A DSP mixer with AEC and good mics are generally a good idea. Use either the balanced or unbalanced audio inputs and outputs. Audio ins and outs are needed for a UC Conferencing application to get the near end audio to the far end, and receive far end audio for connection to the room's audio system.

Step 4: For USB streaming, connect the Host PC with the conferencing application to the AV Bridge CONFERENCE with the provided USB 2.0 Type-A Male to Type-B Male cable.

Step 5: For IP configuration and control, connect the AV Bridge CONFERENCE to the LAN, which will allow set-up, configuration and control of the AV Bridge CONFERENCE via the internal web pages in from any of the approved browsers. The system configuration is an important step in the installation.

This manual contains a Web Page Screen Shot Tour of the embedded web pages in the AV Bridge CONFERENCE. This tour is provided to help the Administrator and User navigate the system.



**LOOK
HERE**

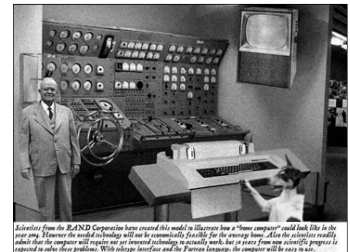
Important Note: The AV Bridge CONFERENCE will use DHCP (by default) to obtain an IP address when connected to the LAN. The IP address will be viewable on the front panel menu. In absence of a DHCP server, the AV Bridge CONFERENCE will default to a Static IP address, which is 169.254.1.1

Compatibility

The AV-Bridge will work with the following web browsers, soft codecs, computer operating systems and media players:

Compatibility: Web Browsers:

- 1) Internet Explorer (IE 8 and above)
- 2) Safari (Rev 4 and 5)
- 3) Safari/iOS (Rev 4 and 5)
- 4) Chrome (the latest and current release - auto updating)
- 5) Firefox (the latest and current release - auto updating)



Soft Clients Compatibility: AV Bridge CONFERENCE Release 2.0.x is compatible with the following soft codecs or applications, in no particular order (see Release notes for versions tested):

- | | |
|--------------------------------|------------------|
| 1) Skype | Win 7 & Mac OS X |
| 2) Web Ex (WBS 28.7 and up) | Win 7 & Mac OS X |
| 3) Microsoft Lync | Win7 |
| 4) Cisco Jabber | Win 7 & Mac OS X |
| 5) Vidyo Desktop | Win 7 & Mac OS X |
| 6) Google Plus | Win 7 |
| 7) Adobe Connect 8 | Win 7 & Mac OS X |
| 8) LifeSize ClearSea | Win 7 |
| 9) GoToMeeting (Citrix) | Win 7 & Mac OS X |
| 10) Polycom M100 | Win7 |
| 11) Panaopto (lecture capture) | Win 7 |
| 12) And More! | |

Compatibility: Media Players:

The UVC with MJPEG and IP with H.264 video are compatible with the industry leading PC media players.

- Quick-Time 10.2
- VLC Media Player 2.0.4
- Real Player 16.0

Compatibility: Operating Systems

- Apple OS X (10.7 and above)
- Windows XP w/Service Pack 3 with known issues and errata
- Windows 7
- Linux

Evolving Compatibilities:

As more UC soft-client and lecture capture programs are released and gain popularity, Vaddio will provide a continuing research and development effort to ensure the compatibility with other manufacturer's products.

USB 2.0

The USB 2.0 UVC (Universal Video Class) video driver resolution table is an internal list of resolutions available for the Host PC and the AV Bridge CONFERENCE to negotiate and use for any specific application. Typically, the highest resolution possible between both the PC and AV Bridge CONFERENCE is used. However, not all OS and application combinations are typical. Some applications are assigned to the lowest resolution to purposely minimize the bandwidth requirement. A user configurable option for setting the video color space as 4:2:0 or 4:2:2 is available in the web pages. The 4:2:0 color space will reduce USB bandwidth by up to 25% and may actually improve video quality with some UC soft clients.

Table: Supported UVC Resolutions

Format	Resolution	Frame Rates	Aspect Ratio
MJPEG	720p (1280 x 720)	15/30	16:9
	960 x 544	15/30	~16:9
	704 x 576 (4CIF)	15/30	~4:3
	640 x 480 (VGA)	15/30	4:3
	360p (640 x 360)	15/30	16:9
	424 x 240	15/30	~16:9
	352 x 240 (SIF)	15/30	~4:3
	320 x 240 (QVGA)	15/30	4:3
	180p (320 x 180)	15/30	16:9

Table: Supported IP Streaming Resolutions

Format	Resolution	Frame Rates	Aspect Ratio
RTSP Streaming & HLS (HTTP Live Streaming)	1080p	15/30	16:9
	720p	15/25/30	16:9
	704 x 576 (4CIF)	15/30	~4:3
	640 x 480 (VGA)	15/30	4:3
	352 x 288 (CIF)	15/30	~4:3

Video Inputs: Supported Formats and Resolutions

Video inputs supporting HDMI, HD or CVBS (Composite video, NTSC or PAL video formats). The DE-15 HD connection supports either YPbPr or select wide screen RGBHV resolutions on the DE-15 connector.

HDMI and YPbPr:

- 1080p/60/59.94/50/30/25 frames/s, 1080p/24 frames/s (HDMI only)
- 1080i/59.94/50 fields/sec
- 720p/60/59.94/50 frames/s

RGBHV (VESA Resolutions):

- 1280 x 720 @ 60Hz (16:9)
- 1280 x 768 @ 60Hz (15:9)
- 1280 x 800 @ 60Hz (16:10)
- 1360 x 768 @ 60Hz (16:9)
- 1024 x 768 @ 60Hz (4:3 centered in 16:9 frame)

DVI (on HDMI connector using sRGB color space):

- 1080p/60/59.94/50 frames/s
- 1080i/59.94/50Hz fields/sec
- 720p/60/59.94/50Hz frames/s
- 1440 x 900 @ 60Hz
- 1360 x 76 @ 60Hz
- 1280 x 800 @ 60 Hz
- 1280 x 768 @ 60Hz
- 1280 x 720 @ 60Hz

SD (Standard Definition) Composite Video:

- 480i/29.97Hz NTSC & 576i/25Hz PAL

System Configuration and Programming

Front Panel Menu System

The front panel menus allow some basic configuration of the AV Bridge CONFERENCE and serves to display the important system parameters and settings. The menu tree is listed below:

- > Start Page: Initializing and Audio Ladder Appear
- > Main Menu
 - > Audio Inputs (Selectable from front panel)
 - > Unbalanced (High Z)
 - > Balanced (Low Z)
 - > Video Inputs (Selectable from front panel if connected to video source only)
 - > Auto (if only one video input exists)
 - > HD YPbPr
 - > HD RGBHV
 - > HDMI
 - > SD (Standard definition composite video, NTSC or PAL)
 - > Streaming
 - > USB Streaming
 - > IP Streaming (resolution and quality will be shown)
 - Resolution (i.e. 720p)
 - Quality (i.e. High Quality, Standard, Low Bandwidth)
 - > Network Configuration (read only)
 - > Host Name
 - > Network Settings (read only)
 - > Mac Address:
 - > IP Address:
 - > Subnet Mask:
 - > IP Gateway:
 - > Type: DHCP or Static
 - > Version
 - > 1.0.0 (version number will change if/when the device is updated)

Front Panel Selections:

Video Input Selection: This allows the user to select between Auto-Detection, HDMI, HD, or SD video inputs. These selections correspond to the connectors on the back panel of the AV Bridge CONFERENCE.

- The HDMI connector only accepts HDMI and DVI signals up to 1080p/60.
- The HD connector (DE-15) will support signal formats of up to 1080p/60 on either YPbPr or RGBHV inputs.
- The composite video input Standard Definition only at resolutions of 480i/NTSC and 576i/PAL. This input is not an SDI or HD-SDI input, *it's just standard definition, composite video* on a BNC connector.

Audio Input Selection:

The user has the ability to select between the balanced stereo audio line input and an unbalanced stereo line input.

Selecting Streaming Type:

The type of streaming, USB (MJPEG with PCM audio) or IP (H.264 with AAC audio) are selectable from the front panel. This menu screen displays the IP streaming resolution and quality.

Network Settings

The Network settings is a “read only” message representing the current IP addresses defined for the AV Bridge CONFERENCE by the webpages. Properties displayed include:

- Mac Address:
- IP Address:
- Subnet Mask:
- IP Gateway:
- Net Type: DHCP

Hotkey Buttons and Indicators

A number of common user controls have been included on the front panel for quick access by the user during a streaming session. Dedicated controls and indicators include:

- **Video Mute:**
Stops the video input source from being sent to the Host PC and replaces with a color bar image. The Video Mute button will be backlit Red when in mute state.
- **Audio Mute:** This button mutes the input audio source being sent to the Host PC. The Audio Mute button will be backlit in red when in mute state.
- **Audio Level:** A rotary control with 10 steps (but goes to 11) allows the user to adjust the audio input level being sent to the Host PC. A visual volume level is presented on the LCD to provide feedback of the current audio level. (Note: This level is not the same as the PC’s record channel volume controls.) The audio ladder will show a relative volume level as it is adjusted however, after it shows that level for a few seconds it will act as a VU meter.
- **Video Input LED:**
A visual LED indicator represents the current video source being sent to the Host PC. The selected source is indicated with a blue LED.
- **Audio Input LED:**
A visual indication of current audio input source being sent to the Host PC. The selected source is indicated with a blue LED.

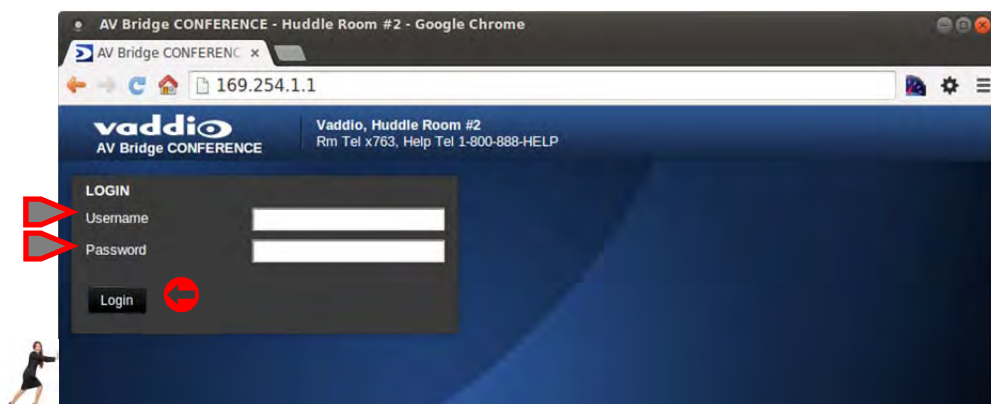
Web Page Screen Shot Tour:

Screen Shot: Login

The AV Bridge CONFERENCE web server is an administrator’s management tool and requires authentication for access.

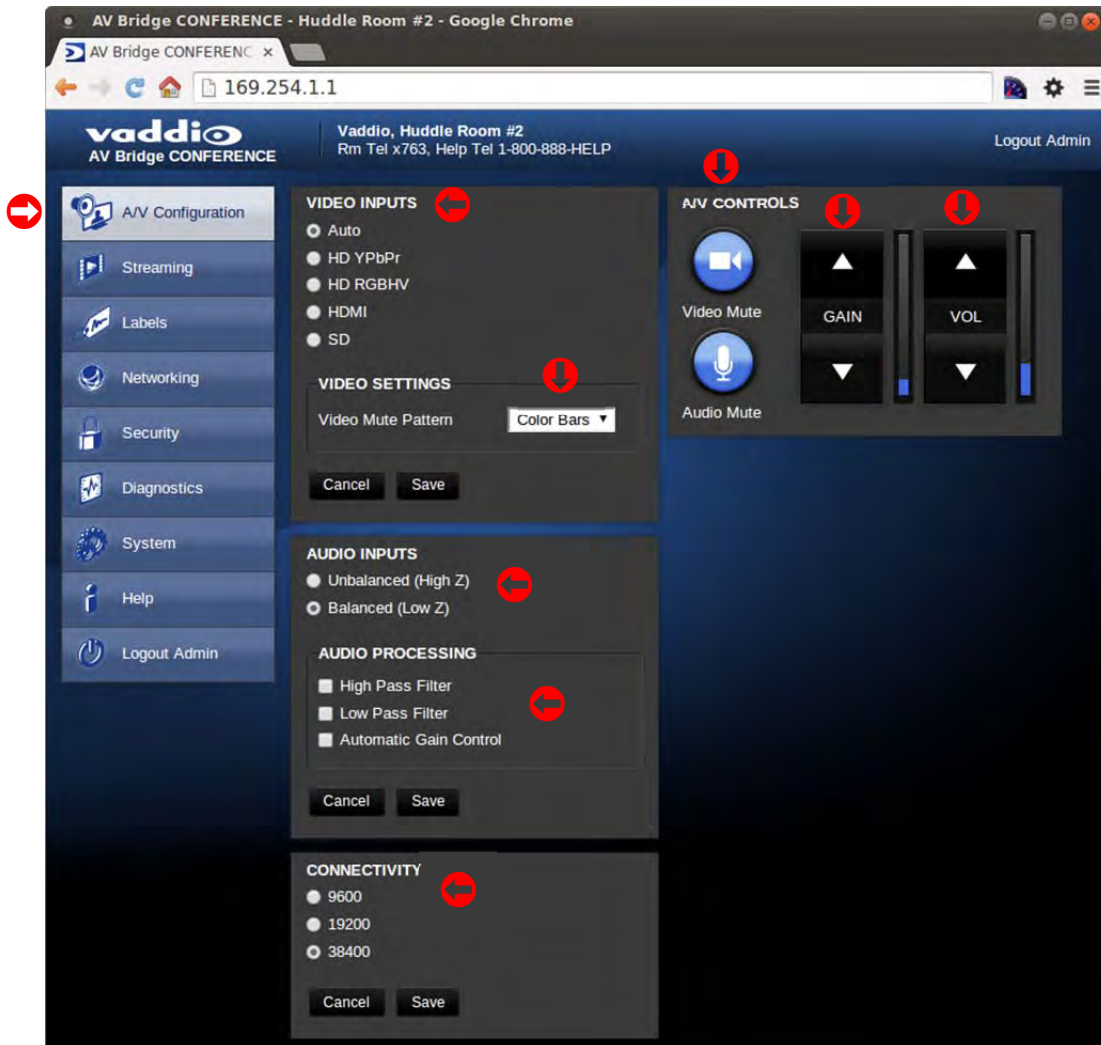
- The user account name is: admin
- The default password is: password

The user account and password can be changed after the initial login.



Screen Shot: A/V Configuration Web Page

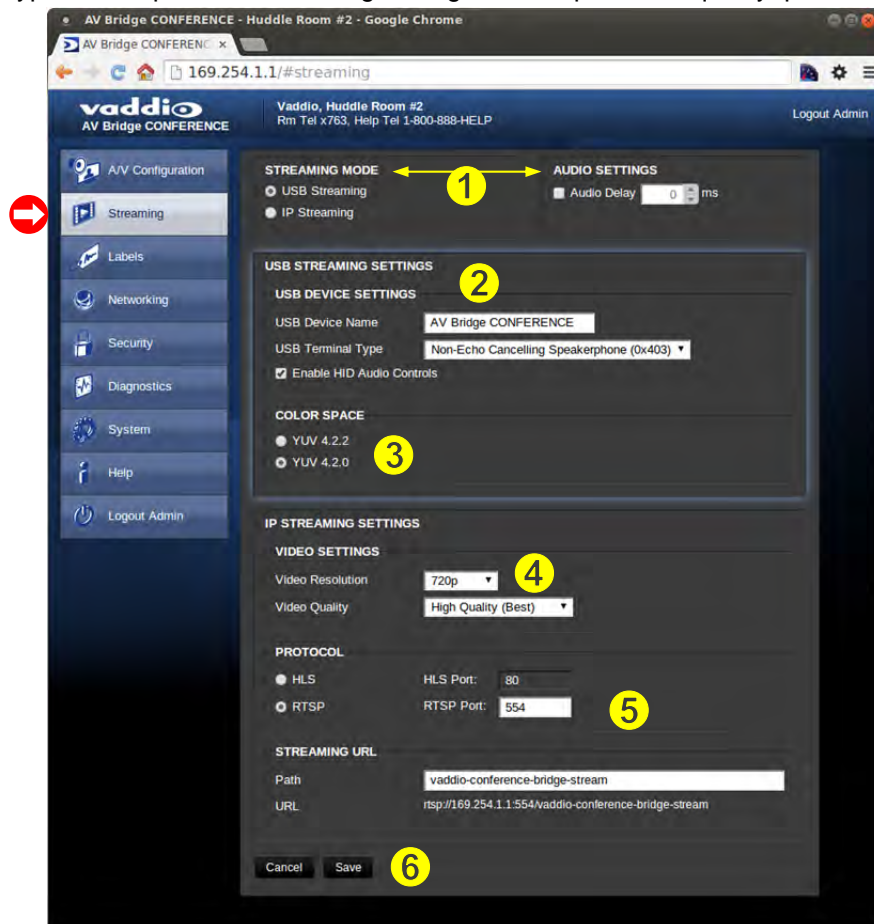
Choose video input and video mute pattern, audio input and audio processing desired, and the connectivity speed (Note: the baud rate is defaulted at 38400). Video mute and audio mute can be selected (when selected the mute buttons will turn red), the gain (input) and volume control (output) of the audio is available to adjust as well. In each section, after a change is made click on **Save** if the intent is to keep any parameter change.



NOTE: The default baud rate is 38.4 kbps

Screen Shot: Streaming

The Streaming Page allows an administrator to set up the type of streaming, audio delay, USB streaming settings and USB terminal type, color space, IP streaming settings, video speed and quality, protocol and path.

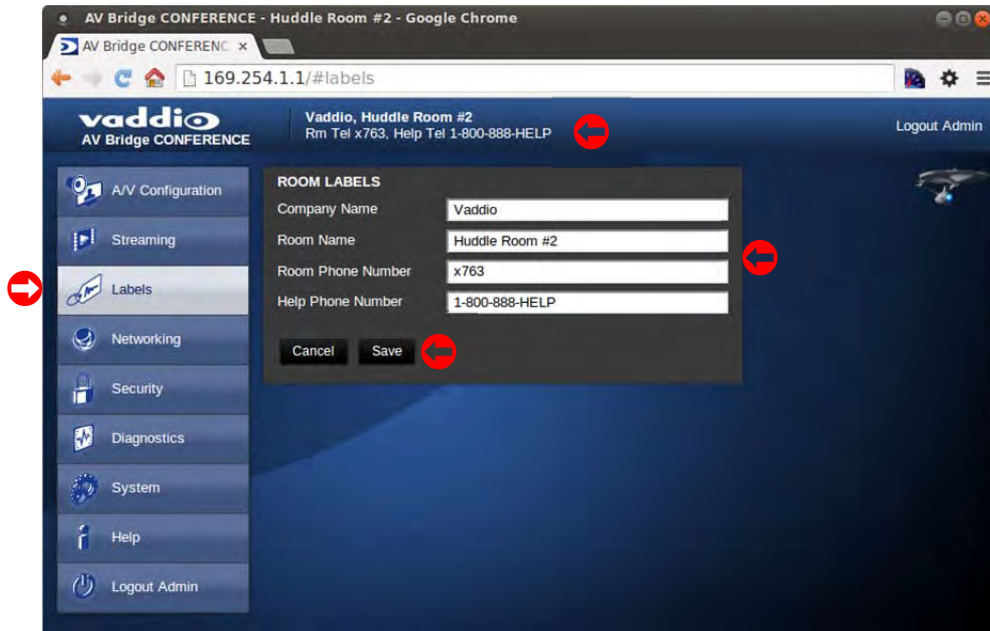


The Streaming Menu:

- 1) The **USB STREAMING MODE** is set for either USB 2.0 streaming (MJPEG/PCM) or IP streaming (H.264/AAC) however, the AV Bridge CONFERENCE cannot stream both at the same time. It can stream USB and accept IP control, or it can IP stream with IP control. Choose the streaming mode here. Frequently the Audio requires a delay in order for the video and audio to arrive simultaneously. The audio delay is like the lip sync control on a BD player.
- 2) **USB STREAMING SETTINGS** allows the admin to add a device name (friendly name) and to enable HID audio controls for applications that allow it. Here the **USB Terminal Type** is also set and depends upon the application and the room audio system configuration. Use Type 0x405 when connecting to professional audio conferencing mixers with echo cancellation. Use Type 0x403 when connecting to audio equipment that does not have internal echo cancellation.
- 3) **COLOR SPACE** control allows the admin to reduce the color depth to 4:2:0, which is used with applications where image quality is not as critical or the window sizes available are small. The 4:2:2 color is used by many applications that take advantage of the video performance where the colors are more vivid and precise.
- 4) The **IP STREAMING SETTINGS** allow the selection of the target performance for the IP Streaming. AV Bridge CONFERENCE is set up for a variable bit rate, which is much simpler to use. The user can select the resolution and the quality, such as High Quality (Best), Standard Quality (Better) and Low Bandwidth (Good - all Good frame rates are at 15fps). Every effort to eliminate bad combinations with the 5 or 6 parameters that make up the image size, quality, rate etc... has been made, so you can't pick 1080p at a bit rate of 128Kbps, which would look totally gnarly-awful...if it worked at all.
- 5) The **IP STREAMING PROTOCOL** also allows the admin to choose the streaming type and the port number for RTSP. The HLS port is always on 80. The supported protocols are RTSP and HLS (Apple's HTTP Live Streaming). RTSP is best for live applications, where HLS serves the Apple iOS devices and is better for playback due to the amount of buffering the HLS has built-in. The **STREAMING URL** auto populates and that path can be changed.
- 6) When finished setting up the streaming parameters, click on Save to put the changes into effect or Cancel to...cancel it.

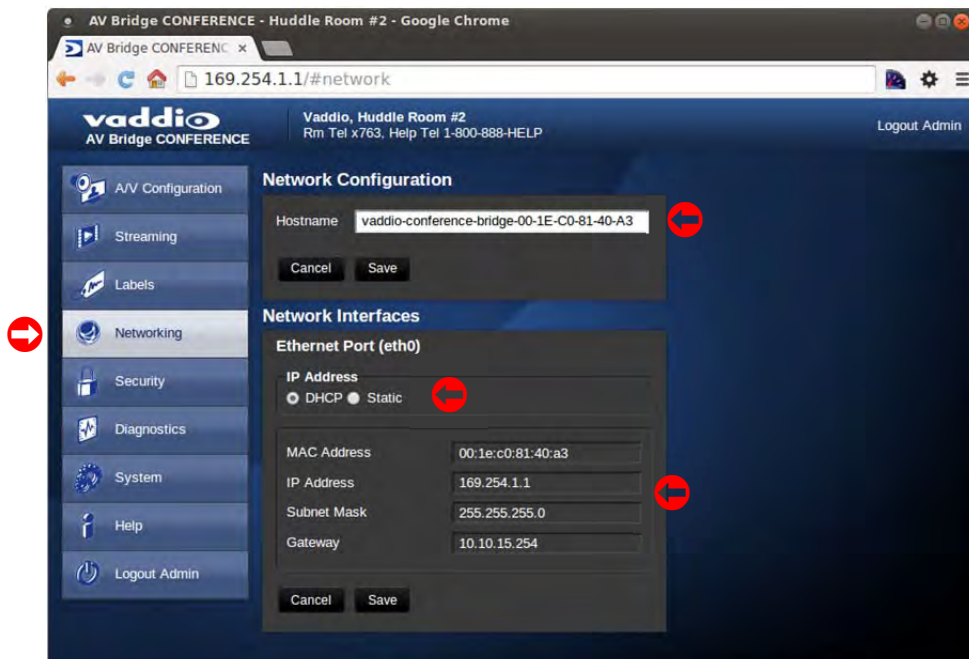
Screen Shot: Room Labels

The room Labels menu allows the admin to label the company name, room name, room phone and help phone on a per camera basis. The labels appear on every page at the top/middle of the page. Simply enter the room information and click Save.



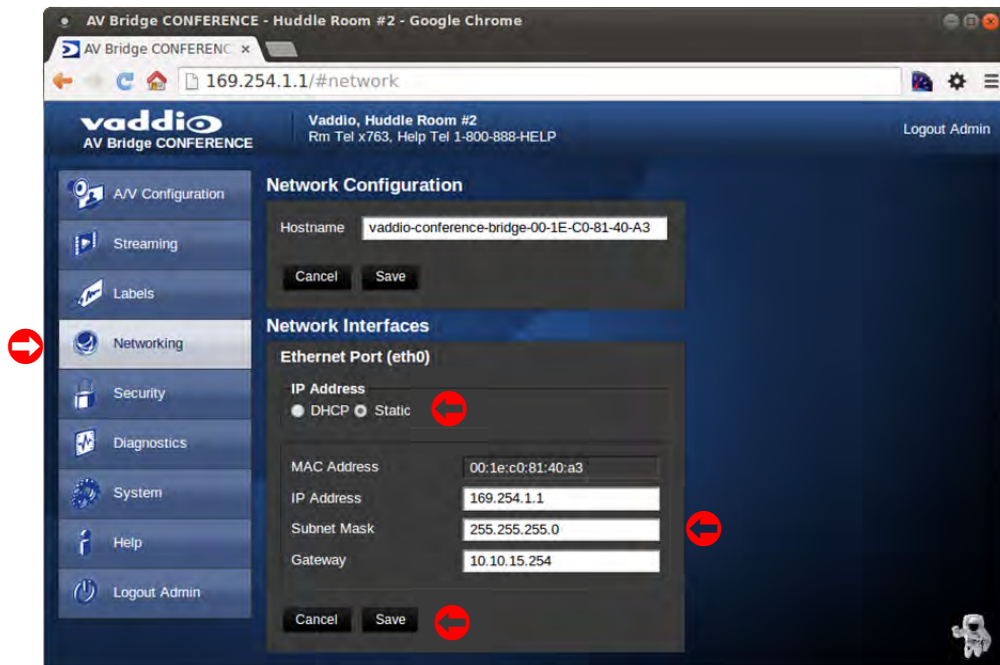
Screen Shot: Network Configuration - DHCP

The Networking page is for configuring the AV Bridge CONFERENCE IP address. It supports either DHCP or Static IP address along with a Host Name. It also includes MAC address associated with the AV Bridge CONFERENCE. All IP information is available on the front panel LCD as read only text.



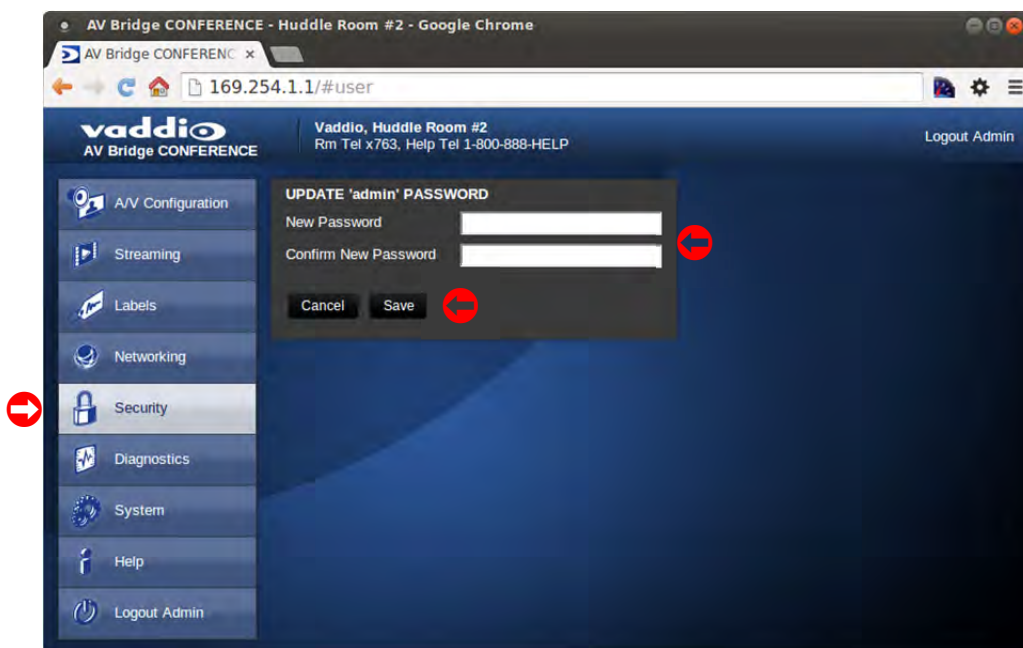
Screen Shot: Network Configuration - Static IP

To set up the Ethernet Port to Static IP address, click on Static and enter the IP address, the subnet mask and the gateway and click on save. Double check the data prior to clicking Save.



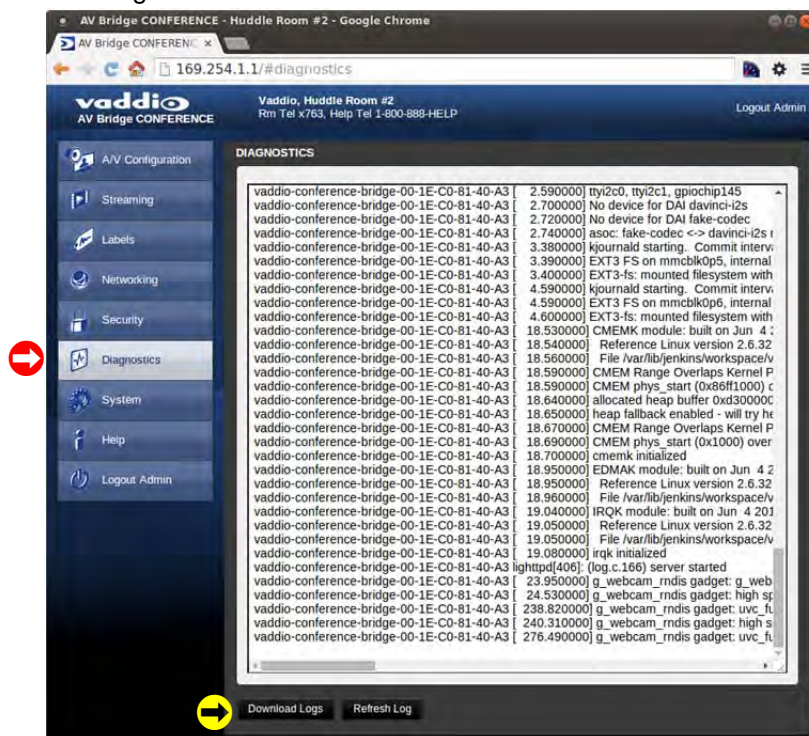
Screen Shot: Security

The admin account has a password for login security. The admin account will always require a password entry for login to the administrator pages on the AV Bridge CONFERENCE. It ships with a factory default password of: 'password', but can be modified after initial login. Click on Save if the password is changed.



Screen Shot: Diagnostics

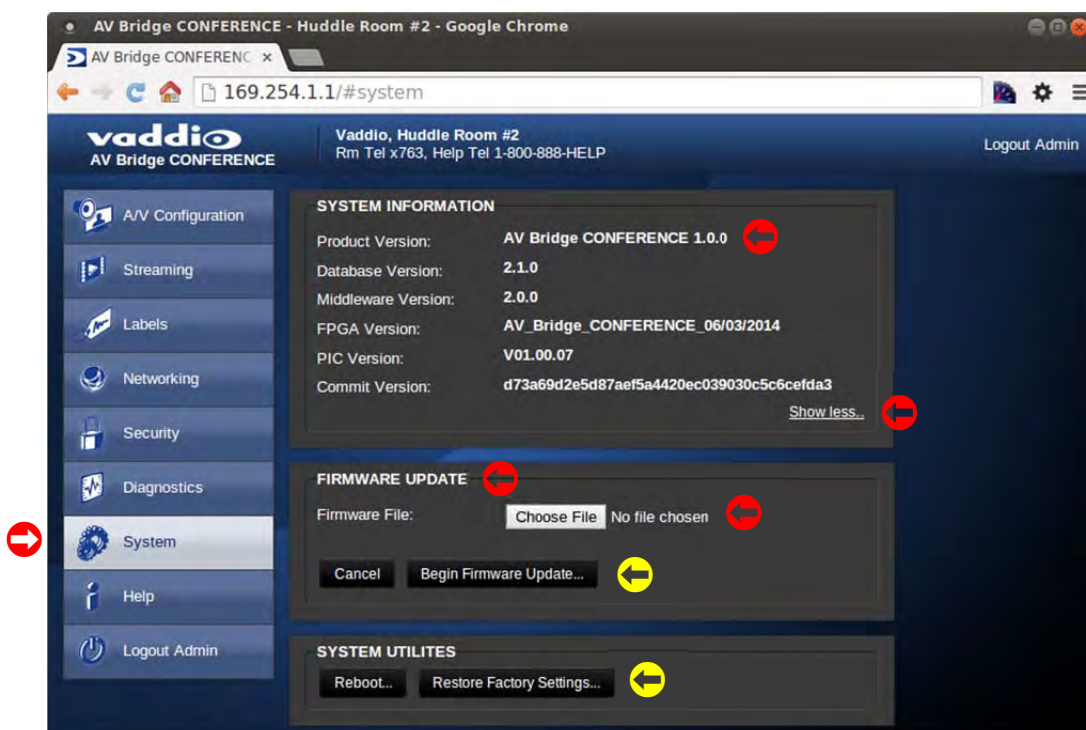
The diagnostics function within the AV Bridge CONFERENCE is for advanced troubleshooting. It includes logging capabilities of key events and error reporting during normal operations. The internal logging function is setup as a revolving FIFO with estimated internal storage capabilities for up to one week. The administrator has the ability to clear the log or download the log to a local PC.



Screen Shot: System Menu

The system menu displays the software versions and to provide for future firmware update operations. The administrator can select the new firmware file from local or network drive. Select the desired update firmware and click **Begin Firmware Update**. The update process will include user notification of status. The Show less option closes down to the version detail only. The SYSTEM UTILITIES allows a system **Restore Factory Defaults** over the network connection.

Note: The version numbers can and will change over time. All product is shipped with the most current firmware. Contact Vaddio Tech with any questions about the firmware or about anything at all...really.



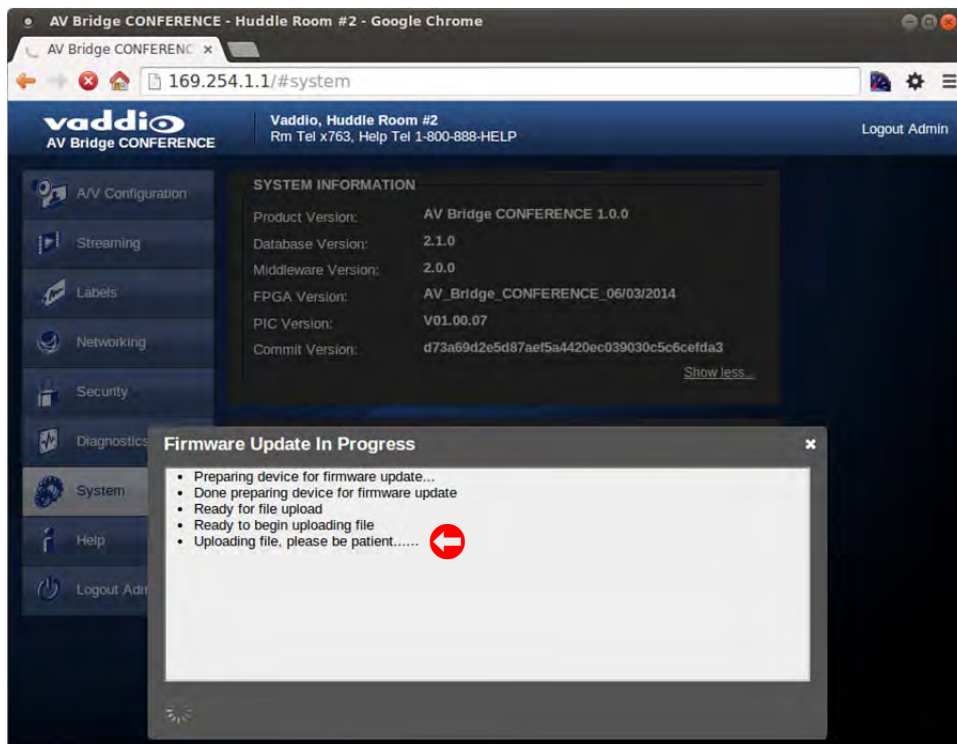
Screen Shot: System Confirmation Messages

The system will provide user notification and ask for confirmation to enter the firmware/software update process. A confirmation pop-up and warning is displayed after clicking on “Begin Firmware Update...” Click Continue to proceed.



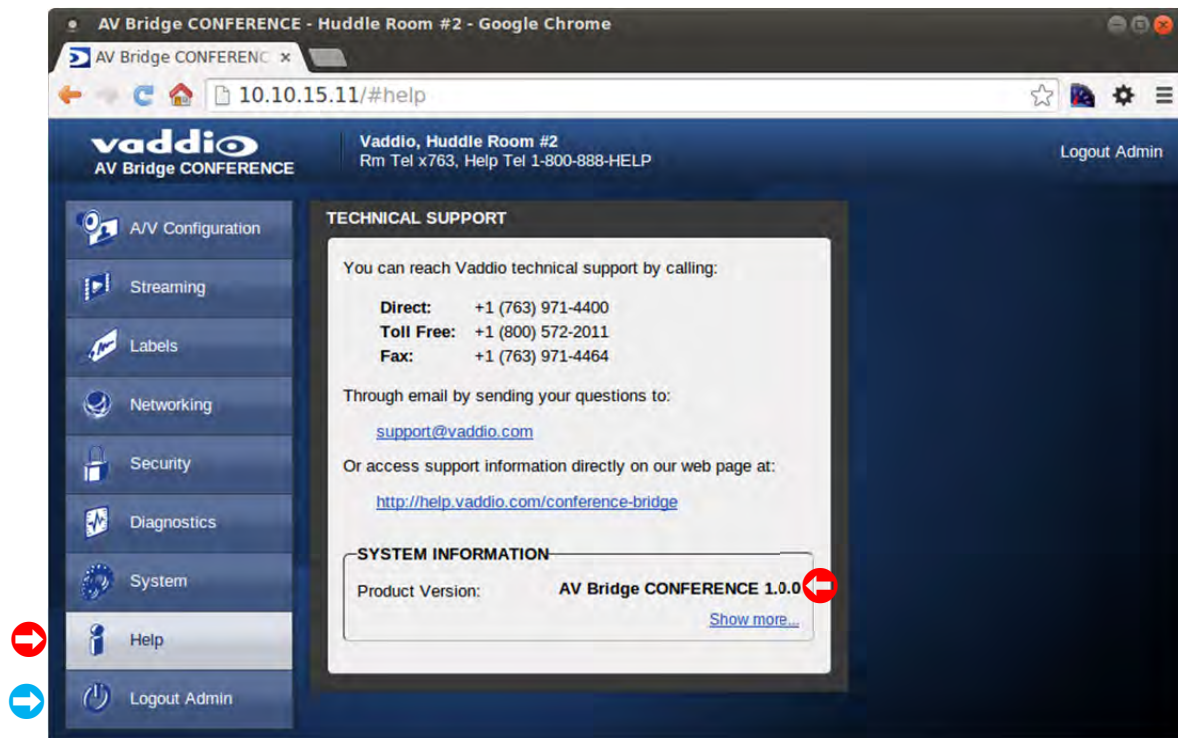
Screen Shot: Firmware Update in Progress

The in progress notification will prompt the administrator for patience. Please do not interrupt the Firmware Update while in progress. If an update is unintentionally interrupted, then there is a high probability that a return to factory defaults will be required and all information in each menu will be lost. See next page for Restoring Factory Defaults.



Screen Shot: Help Menu


The Help menu provides general information on the AV Bridge CONFERENCE to assist the administrator in configuration and programming of the device. The Help also includes information on the current firmware release loaded on the device. Click on the support for product related documentation from the Vaddio website.



TECHNICAL SUPPORT NOTE:

Please work with your Network Administrator prior to calling Vaddio for technical support. Please have on-site network personnel initiate tech support calls with Vaddio.

Logout:

The Logout Admin (above ) menu function exits from the administrator pages within the web server.

Restoring Factory Defaults

The AV Bridge CONFERENCE can be restored to factory defaults with the dip switches on the rear of the device. It can also be restored remotely with the internal web pages. The process for defaulting AV Bridge CONFERENCE to factory settings with the dip switches is as follows:

- **Step 1:** Place all dip switches to the off position (down). A warning pops up (without crocodile sign).



Warning: Current Settings will be erased.

- **Step 2:** Press Reset on the front panel of the AV Bridge CONFERENCE. Device will reboot to factory settings.
- **Step 3:** Put all dip switches back up and proceed to set up the AV Bridge CONFERENCE once again.

Warranty Information

(See Vaddio Warranty, Service and Return Policies posted on vaddio.com for complete details):

Hardware* Warranty: Two (2) year limited warranty on all parts and labor for Vaddio manufactured products. Vaddio warrants its manufactured products against defects in materials and workmanship for a period of two years from the day of purchase, to the original purchaser, if Vaddio receives notice of such defects during the warranty. Vaddio, at its option, will repair or replace products that prove to be defective. Vaddio manufactures its hardware products from parts and components that are new or equivalent to new in accordance with industry standard practices.

Exclusions: The above warranty shall not apply to defects resulting from improper or inadequate maintenance by the customer, customers applied software or interfacing, unauthorized modifications or misuse, mishandling, operation outside the normal environmental specifications for the product, use of the incorrect power supply, modified power supply or improper site operation and maintenance. OEM products and products manufactured by other companies are excluded and are covered by the manufacturer's warranty.

Vaddio Customer Service: Vaddio will test, repair, or replace the product or products without charge if the unit is under warranty. If the product is out of warranty, Vaddio will test then repair the product or products. The cost of parts and labor charge will be estimated by a technician and confirmed by the customer prior to repair. All components must be returned for testing as a complete unit. Vaddio will not accept responsibility for shipment after it has left the premises.

Vaddio Technical Support: Vaddio technicians will determine and discuss with the customer the criteria for repair costs and/or replacement. Vaddio Technical Support can be contacted through one of the following resources: e-mail support at support@vaddio.com or online at vaddio.com.

Return Material Authorization (RMA) Number: Before returning a product for repair or replacement request an RMA from Vaddio's technical support. Provide the technician with a return phone number, e-mail address, shipping address, product serial numbers and original purchase order number. Describe the reason for repairs or returns as well as the date of purchase. See the General RMA Terms and Procedures section for more information. RMA's are valid for 30 days and will be issued to Vaddio dealers only. End users must return products through Vaddio dealers. Include the assigned RMA number in all correspondence with Vaddio. Write the assigned RMA number clearly on the shipping label of the box when returning the product. All products returned for credit are subject to a restocking charge without exception.

Voided Warranty: The warranty does not apply if the original serial number has been removed or if the product has been disassembled or damaged through misuse, accident, modifications, use of incorrect power supply, use of a modified power supply or unauthorized repair.

Shipping and Handling: Vaddio will not pay for inbound shipping transportation or insurance charges or accept any responsibility for laws and ordinances from inbound transit. Vaddio will pay for outbound shipping, transportation, and insurance charges for all items under warranty but will not assume responsibility for loss and/or damage by the outbound freight carrier. If the return shipment appears damaged, retain the original boxes and packing material for inspection by the carrier. *Contact your carrier immediately.*

Products not under Warranty: Payment arrangements are required before outbound shipment for all out of warranty products.

Other General Information:

Care and Cleaning

Do not attempt to take this product apart at any time. There are no user-serviceable components inside.

- Do not spill liquids in the product
- Keep this device away from food and liquid, especially caviar.
- For smears or smudges on the product, wipe with a clean, soft cloth
- Do not use any abrasive chemicals.

Operating and Storage Conditions:

Do not store or operate the device under the following conditions:

- Temperatures above 40°C (104°F) or temperatures below 0°C (32°F)
- High humidity, condensing or wet environments
- In swimming pools with movie stars
- In inclement weather
- Dry environments with an excess of static discharge
- In, under or around basement laundry tubs or outer space
- Under severe vibration

Compliance and CE Declaration of Conformity - AV Bridge CONFERENCE

Compliance testing was performed to the following regulations:

FCC 47 CFR Part 15, Subpart B

ICES-003, Issue 4: 2004

EN-55011:2007 + A2: 2007

EN 55022:2006 + A1: 2007

CISPR 22:1997

IEC 60950-1:2005 (Second Edition); Am 1:2009

EN 60950-1:2006+A11:2009+A1:2010+A12:2011

EMC Directive 2004/108/EC

Class A

Class A

Class A

Class A

Class A

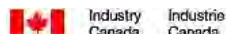
Safety

Safety

Class A

**FCC Part 15 Compliance**

This equipment has been tested and found to comply with the limits for a Class A digital device, pursuant to Part 15 of the FCC Rules. These limits are designed to provide reasonable protection against harmful interference when the equipment is operated in a commercial environment. This equipment generates, uses, and can radiate radio frequency energy and, if not installed and used in accordance with the instruction manual, may cause harmful interference to radio communications. Operation of this equipment in a residential area is likely to cause harmful interference in which case the user will be required to correct the interference at his/her own expense. Operation is subject to the following two conditions: (1) This device may not cause interference, and (2) This device must accept any interference including interference that may cause undesired operation of the device. Changes or modifications not expressly approved by Vaddio can affect emission compliance and could void the user's authority to operate this equipment.

**ICES-003 Compliance**

This digital apparatus does not exceed the Class A limits for radio noise emissions from digital apparatus set out in the Radio Interference Regulations of the Canadian Department of Communications.

Le présent appareil numérique n'émet pas de bruits radioélectriques dépassant les limites applicables aux appareils numériques de la classe A prescrites dans le Règlement sur le brouillage radioélectrique édicté par le ministère des Communications du Canada.

**European Compliance**

This product has been evaluated for Electromagnetic Compatibility under the standards for Emissions and Immunity and meets the requirements for E4 environment. This product complies with Class A (E4 environment). In a domestic environment this product may cause radio interference in which case the user may be required to take adequate measures.

Standard(s) To Which Conformity Is Declared:

EN-55011:2007 + A2:2007

EN 55022:2006 + A1:2007

EN 61000-6-4:2007

EN 61000-3-2:2006

EN 61000-3-3:2008

EN 61000-6-2:2005

EN 55024:1998 + Amendments A1:2001 + A2: 2003

EN 61000-4-2:2008

EN 61000-4-3:2008

EN 61000-4-4:2004 + Corrigendum 1:2006 + Corr. 2:2007

EN 61000-4-5:2005

EN 61000-4-6:2008

EN 61000-4-8:2009

EN 61000-4-11: Second Edition: 2004

IEC 60950-1:2005 (Second Edition); Am 1:2009

EN 60950-1:2006+A11:2009+A1:2010+A12:2011

Emissions

Conducted and Radiated Emissions

Electromagnetic Compatibility

Limits for Harmonic Content

Limits for Voltage Fluctuations and Flicker

Immunity for Industrial Environments

Immunity

Electrostatic Discharge

Radiated Immunity

Electrical Fast Transients

Surge Immunity

Conducted Immunity

Power Frequency Magnetic Field

Voltage Dips, Interrupts and Fluctuations

Safety

Safety

General Specifications

Part Numbers	AV Bridge CONFERENCE 999-8215-000 - North America AV Bridge CONFERENCE 999-8215-001 - International
Firmware Release 1.0.0	Video Encoding: H.264 (IP) or MJPEG (USB) Resolution up to 1080/30 (IP) or 720P/30 (USB) Audio Encoding: AAC (IP) or PCM (USB) Variable Bit Rates for IP
Supported Media Players	Real Media Player, QuickTime, VLC Media Player
Video Inputs & Supported Video Resolutions:	Connectors: HDMI, DE-15 (for YPbPr and RGBHV) and BNC-F for Std. Def. HDMI and YPbPr: 1080p/60/59.94/50/30/25 frames/s, 720p/60/59.94/50 frames/s, 1080i/59.94/50 fields/sec, 1080p/24 (on HDMI input only) RGBHV (VESA RESOLUTIONS): 1280 x 720@60Hz (16:9), 1280x768@60Hz (15:9)m, 1280x800@60Hz (16:10), 1360 x 768@60Hz (16:9), 1024 x 768@60Hz (4:3 centered in 16:9 frame) DVI (on HDMI connector using sRGB color space): 1080p/60/59.94/50/frames/s, 720p/60/59.94/50Hz frames/s 1080i/59.94/50Hz, fields/sec, 1440 x 900@60Hz, 1360 x 768@60Hz, 1280 x 800@60 Hz, 1280 x 768@60Hz, 1280 x 720@60Hz, EDID Supported Resolutions: 1080p/60/59.94/50/frames/s, 720p/60/59.94/50Hz frames/s, 1440 x 900@60Hz, 1360x768 @ 60Hz, 1280x800 @ 60 Hz Composite (SD-Standard Definition): 480i/29.97Hz NTSC, 576i/25Hz PAL
Video Processing	Auto Scaling, Noise Filter, Deinterlacing
Analog Audio Input	XLR-F(balanced 10k ohm) Nominal Line Level +4dBu RCA-F (unbalanced 10k ohm) Nominal Line Level -10dBV
Analog Audio Output	XLR-M (balanced 50 ohm) RCA-F (unbalanced 10k ohm)
Audio Processing	AGC, High Pass and Low Pass Filters
USB 2.0 Interface	Connector Type-B Female, USB 2.0 Compliant Supported Drivers: USB Video Class, (UVC), USB Audio Class (UAC) No Custom Drivers, Custom Programs or Headaches Required
Network Interface	Connector: RJ-45 Type 10/100 Base-T
IP Streaming Supported	RTSP or HLS (Apple's HTTP Live Streaming)
RS-232 Port	Connector: RJ-45
User Controls and Configuration	<ul style="list-style-type: none"> • Front panel LCD and controls for high use functions such as video input select, volume, streaming type and for viewing network information • Embedded web server for advanced configurations and administration • Rear panel dip switches (restore factory defaults and future functions)
Power Supply	Connector: 5.5mm OD x 2.5mm ID Coaxial 18VDC, 2.75 Amp
Operating Temperature	32° to 104° F (0° to 40° C)
Power Consumption	Less than 50 Watts
Dimensions (WxHxD)	18.93" W x 1.72" H x 7.0" D
Weight	3.14159321 lbs. (1.425 kg)

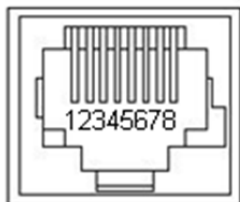
Appendix 1: Connectors Pin Outs

RS-232 on AV Bridge CONFERENCE

Baud Rate: Selectable 9600, 19.2, or 38.4 kbps

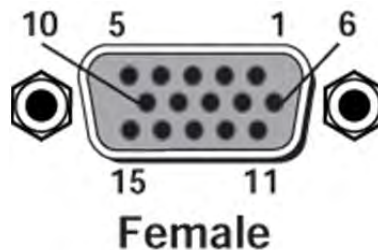
- **NOTE: The Default Baud Rate is 38.4 kbps**

Pin #	RS-232 Port
1	Unused
2	Unused
3	Unused
4	Unused
5	Unused
6	GND
7	TXD
8	RXD



The DE-15 video port will accept either RGBHV or YPbPr video formats.

Pin#	RGBHV	YPbPr
1	Red	Pr
2	Green	Y
3	Blue	Pb
4	-	-
5	N/C	N/C -
6	Red GND	Pr GND
7	Green GND	Y GND
8	Blue GND	Pb GND
9	No Pin	-
10	GND	GND
11	-	-
12	-	-
13	H-Sync	-
14	V-Sync	-
15	N/C	N/C



Appendix 2: Vaddio Serial Command API

The Vaddio Serial Command protocol is a high level text based command line interface supported on the RS-232 port or via Telnet session on the AV Bridge CONFERENCE.

Format:

The AV Bridge CONFERENCE command application protocol interface is intended to allow external controllers such as AMX or Crestron to control the device. The protocol is based upon ASCII format following the VT100 terminal emulation standard with an intuitive textual command nomenclature for ease of use. Again, the API is supported on both the RS-232 and Ethernet physical layers. All ASCII characters will be echoed to terminal program and appended with VT100 string **-ESC[J** (HEX- 1B 5B 4A). Vaddio Command lines are terminated on carriage return. After the carriage return, the VT100 appends with **-ESC[J**.

(Note that most terminal programs automatically strip the VT100 string.)

General format usage follows a get/set structure. Usage examples for each type are:

Set Example:

COMMAND: > audio mute on
RESPONSE: >OK

Get Example:

COMMAND: > audio mute get
RESPONSE: > audio mute on

Syntax Error Example:

COMMAND: > audio mute on
RESPONSE: > Syntax error: Unknown or incomplete command

Additional programming controls associated with the terminal protocol includes:

- **CTRL 5**- Clears the current serial buffer on the device.

RS-232 Format: The RS-232 command format is based communication interface of:

- Start Bit: 1
- Stop Bit: 1
- Data: 8
- Polarity: None
- Flow Control: None
- Baud Rate: User selectable between 9600, 19,200, 38,400 (**Default is 38,400 bps**)

Telnet Format:

The AV Bridge CONFERENCE also supports the API over a network connection with Telnet. Telnet sessions will require access verification and uses the same username and password associated with the Administrator account on the embedded web server.



Image: Another fine example of a simulated Telnet session

The Details:

- The default Telnet port is 23.
- Command lines are terminated with a carriage return. A complete list of API commands supported by the AV Bridge CONFERENCE is described in the next section.

Command List (Command Line Interface Shell)**Audio Input**• **NAME****audio input** - Gets or sets the current audio input source• **SYNOPSIS****audio input** {get|balanced|unbalanced}• **DESCRIPTION**Method used to get or set the current **audio input** source• **OPTIONS****get** Get the current **audio input****balanced**Set **audio input** to balanced**unbalanced**Set **audio input** to unbalanced• **EXAMPLES****audio input** get*input:* balancedReturns the current **audio input**

audio input unbalanced**OK**Sets the **audio input** to unbalanced

audio input balanced**OK**Sets the **audio input** to balanced**Audio Mute**• **NAME****audio mute** - Gets or sets the current audio mute• **SYNOPSIS****audio mute** {get|on|off|toggle}• **DESCRIPTION**Method used to get or set the current **audio mute**• **OPTIONS****get** Get the current **audio mute****on** Set **audio mute** to on**off** Set **audio mute** to off**toggle** Toggle the **audio mute**• **EXAMPLES****audio mute** get*mute:* offReturns the current **audio mute**

audio mute on**OK**Turns the **audio mute** on

audio mute off**OK**Turns the **audio mute** off



Audio Volume

- **NAME**

audio volume - Gets or sets the current audio gain (input/capture) and volume (output/playback)

- **SYNOPSIS**

audio volume <capture:playback> {get|up|down|set <level>}

- **DESCRIPTION**

Method used to get or set the current **audio volume**

- **OPTIONS**

get Get the current **audio volume**

up Increment **audio volume** one step

down Decrement **audio volume** one step

set Set the **audio volume** level. The level must be in the range from 0-10 inclusive

- **EXAMPLES**

audio volume get

volume:

Returns the current **audio volume**

audio volume set 6

OK

Sets the **audio volume** level to 6

audio volume set 5

OK

Sets the **audio volume** level to 5

Audio

- **NAME**

audio - Gets or sets the current audio settings

- **SYNOPSIS**

audio {input {get|balanced|unbalanced} | mute {get|on|off|toggle} |

volume {get|up|down|set <level>}}

- **DESCRIPTION**

Method used to get or set the current **audio** settings

- **OPTIONS**

input Get or set the current **audio** input source

mute Get or set the current **audio mute**

volume Get or set the current **audio volume**

- **EXAMPLES**

audio input unbalanced

Sets the **audio** input to unbalanced

audio mute get

mute: off

Returns the current **audio mute**

audio volume up

Increment the **audio volume** by one step

Exit

- **NAME**

exit - ends the current API command session

- **SYNOPSIS**

exit

- **DESCRIPTION**

Ends the current API command session. If the session is over telnet, the session is ended and the socket is closed. If the session is over serial, a new session is started.

Help

- **NAME**

help - display an overview of the CLI syntax

- **SYNOPSIS**

help

- **DESCRIPTION**

Display an overview of the command line syntax

History

- **NAME**

history - command history

- **SYNOPSIS**

history [*limit*]

- **DESCRIPTION**

Since many of the programs read user input a line at a time, the command **history** is used to keep track of these lines and also recall historic information

- **HISTORY NAVIGATION**

The command **history** can be navigated using the up and down arrow keys. The up arrow will move up a single entry in the command **history** while the down arrow moves down in the command **history**.

- **HISTORY EXPANSION**

The command **history** supports the expansion functionality from which previous commands can be recalled from within a single session. History expansion is performed immediately after a complete line is read.

Listed below are examples of **history** expansion:

* **!!** Substitute the the last command line.

* **!N** Substitute the Nth command line (absolute as per '**history**' command)

* **!-N** Substitute the command line entered N lines before (relative)

- **EXAMPLES**

history

Displays the current command buffer

history 5

Sets the **history** command buffer to remember the last 5 unique entries

Network Ping

- **NAME**

network ping - send ICMP ECHO_REQUEST to network hosts

- **SYNOPSIS**

network ping [*count* <*count*>] [*size* <*size*>] <destination-ip>

- **DESCRIPTION**

Use the ICMP protocol's mandatory ECHO_REQUEST datagram to elicit an ICMP ECHO_RESPONSE from a host or gateway. ECHO_REQUEST datagrams have an IP and ICMP header, followed by a struct timeval and then an arbitrary number of pad bytes used to fill out the packet.

- **OPTIONS**

count Stop after sending *count* ECHO_REQUEST packets. With deadline option, *ping* waits for *count* ECHO_REPLY packets, until the timeout expires. The default is 5.

destination

The destination IP address where the ECHO_REQUESTS are sent

size The data *size* of the ICMP packet to send. The default is 56 bytes

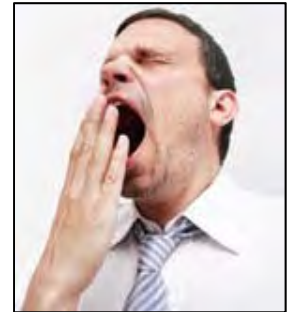
- **EXAMPLES**

network ping 192.168.1.1

Attempt to send 5 ICMP ECHO_REQUESTs with data *size* 56 to the host at 192.168.1.1

network ping count 10 *size* 100 192.168.1.1

Attempt to send 10 ICMP ECHO_REQUESTs with data *size* of 100 to the host at 192.168.1.1



Network Settings

- **NAME**

network settings - get current network settings

- **SYNOPSIS**

network settings {get}

- **DESCRIPTION**

Method used to get the current **network settings** of the device

- **OPTIONS**

get Get the current **network settings** for the machine

- **EXAMPLES**

network settings get

MAC Address:

00:04:a3:85:0a:ee

IP Address:

10.10.8.116

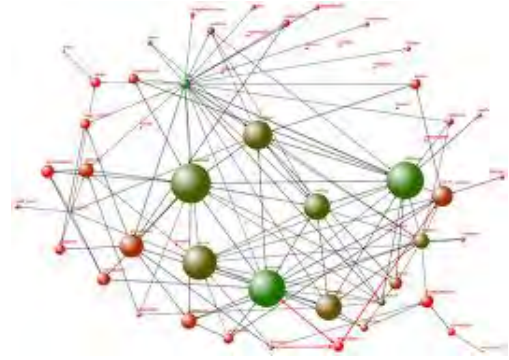
Netmask:

255.255.255.0

Gateway:

10.10.8.100

Returns the current **network settings** for mac address, IP address, net mask, and gateway



Network

- **NAME**

network - Gets the current network settings or pings an IP address

- **SYNOPSIS**

network {settings *get* | *ping* [count <count>] [size <size>] <destination-ip>}

- **DESCRIPTION**

Method used to *get* the current **network** settings or check **network**

- **OPTIONS**

settings

Get the current **network** settings

ping Send ICMP ECHO_REQUEST to **network** host

- **EXAMPLES**

network settings *get*

Gets the current **network** settings

network ping count 1 10.10.10.100

Pings 10.10.10.100 once and displays results

Serial

- **NAME**

serial - Sets or gets the current serial settings

- **SYNOPSIS**

serial {get|9600|19200|38400}

- **DESCRIPTION**

The **serial** command is used to get or set the **serial** baud rate

- **OPTIONS**

get Returns the **serial** speed

9600 Sets the **serial** baud rate to 9600

19200 Sets the **serial** baud rate to 19200

38400 Sets the **serial** baud rate to 38400

- **EXAMPLES**

serial *get*

Gets the current **serial** baud rate

serial 38400

Sets the external **serial** baud rate to 38400



Streaming Mode

- **NAME**

streaming mode - Gets or sets the current streaming mode

- **SYNOPSIS**

streaming mode {get|usb}

- **DESCRIPTION**

Method used to get or set the current **streaming** settings

- **OPTIONS**

get Get the current **streaming mode**

usb Set the current **streaming mode** to USB

- **EXAMPLES**

streaming mode get

mode: usb

Returns the current **streaming mode** ----

streaming mode usb

OK

Sets the **streaming mode** to usb

Streaming Quality

- **NAME**

streaming quality - Gets or sets the current streaming quality

- **SYNOPSIS**

streaming quality {get|low|standard|high}

- **DESCRIPTION**

Method used to get or set the current **streaming quality**

- **OPTIONS**

get Get the current **streaming quality**

low Set video *quality* to low

standard

Set video *quality* to standard

high Set video *quality* to high

- **EXAMPLES**

streaming quality get

quality:

low

Returns the current **streaming quality** ----

streaming quality standard

OK

Sets the **streaming quality** to standard

Streaming Resolution

- **NAME**

streaming resolution - Gets or sets the current streaming resolution

- **SYNOPSIS**

streaming resolution {get|1080p|720p|4cif|480p|cif}

- **DESCRIPTION**

Method used to get or set the current **streaming resolution**

- **OPTIONS**

get Get the current **streaming resolution**

1080p Set video *resolution* to 1080p

720p Set video *resolution* to 720p

4cif Set video *resolution* to 4cif

480p Set video *resolution* to 480p

cif Set video *resolution* to cif

- **EXAMPLES**

streaming resolution get

resolution:

720p

Returns the current **streaming resolution** ----

streaming resolution 720p

OK

Sets the **streaming resolution** to 720p



Streaming

- **NAME**

streaming - Gets or sets the current streaming settings

- **SYNOPSIS**

streaming {mode {get|usb|ethernet} | resolution {get|1080p|720p|4cif|480p|cif} | quality {get|low|standard|high}}

- **DESCRIPTION**

Method used to get or set the current **streaming** settings

- **OPTIONS**

mode Get or set the current **streaming** mode

resolution

Get or set the current **streaming** video *resolution*

quality Get or set the current **streaming** video frame rate and bit rate

- **EXAMPLES**

streaming mode get

mode: usb

Returns the current **streaming** mode

streaming mode ethernet

Sets the **streaming** mode to Ethernet

streaming *quality* standard

Sets the **streaming** *quality* to standard

streaming *resolution* 720p

Sets the **streaming** *resolution* to 720p

Version

- **NAME**

version - display the system version information

- **SYNOPSIS**

version

- **DESCRIPTION**

Display an overview of the command line syntax

- **EXAMPLES**

Version

Returns the current software **version**

Video Input

- **NAME**

video input - Gets or sets the current video input source

- **SYNOPSIS**

video *input* {get|auto|hdmi|rgbhv|sd|ypbpr}

- **DESCRIPTION**

Method used to get or set the current **video** *input* source

- **OPTIONS**

get Get the current **video** *input*

auto Sets the **video** *input* to be automatically selected

hdmi Sets the **video** *input* to be hdmi

rgbhv Sets the **video** *input* to be rgbhv

sd Sets the **video** *input* to be sd

ypbpr Sets the **video** *input* to be ypbpr

- **EXAMPLES**

video *input* get

input: hdmi

Returns the current **video** *input*

video *input* ypbpr

OK

Sets the **video** *input* to ypbpr

video *input* hdmi

OK

Sets the **video** *input* to hdmi



Video Mute

- **NAME**

video mute - Gets or sets the current video mute

- **SYNOPSIS**

video mute {get|on|off|toggle}

- **DESCRIPTION**

Method used to get or set the current **video mute**

- **OPTIONS**

get Get the current **video mute**

on Set **video mute** to on

off Set **video mute** to off

toggle Toggle the **video mute**

- **EXAMPLES**

video mute get

mute: off

Returns the current **video mute**

video mute on

OK

Turns the **video mute** on

video mute off

OK

Turns the **video mute** off

Video

- **NAME**

video - Gets or sets the current video settings

- **SYNOPSIS**

video {input {get|hdmi|rgbhv|sd|ypbpr} | *mute* {get|on|off|toggle}}

- **DESCRIPTION**

Method used to get or set the current **video** settings

- **OPTIONS**

input Get/set the current **video** input source

mute Get/set the current **video mute**

- **EXAMPLES**

video input hdmi

Sets the **video** input to hdmi

video mute get

mute: off

Returns the current **video mute**

Inside Back Cover - Mostly Blank



Toll Free: 800-572-2011 ▪ Phone: 763-971-4400 ▪ FAX: 763-971-4464

www.vaddio.com